

# Thelux

Product guideline

Item Model: TSL-TL037

Marketing item

Description: LED TRACK LIGHT

165-265VAC -100lm/W Ra>80

Approved issue: 10 / 07 / 2022

**WASH** series  
TSL-TL037

## Product Specifications

Model No.	TSL-TL037
Power	10W 20W 30W 60W
PF	>0.5
SPD	1.5KV
Vin.	165-265V
Material	Pure Aluminum
Lens Material	PC
Beam Angle	30°
Tempered Glass	/
UGR	<16
LED type	OSRAM SMD2835
LED Quantity	12/24/36PCS
lm/W	100
Total Lumen Output	1000/2000/3000lm
Driver Type	Constant current driver
Driver Protection	Ip20
Guarantee	2 Years
Certificate	CE /RoHS
Applications	Exhibition halls, galleries, bars, cafes and dining outlets.etc



## Product Features

WASH series LED track light, TSL-TL037, newest model with square beam angle output, specially designed for the commercial applications.

- Housing Material: Pure aluminum housing, the design of the housing is good for heat radiation, to make the lamp longer lifespan.
- Osram brand High Lumen Led chips, can reach  $\geq 140\text{lm/w}$ ; 1.0mm thickness led pcb, good for heat sink, suitable for different applications.
- Single space for external LED driver, can make the temperature of the driver and the chips separate, heat management better than the built-in driver.

### Application areas

Exhibition halls, galleries, bars, cafes, dining outlets, etc.

### Structures and materials

- Housing material: pure aluminum body, with aluminum bracket.
- Optic material: Optical-grade polycarbonate
- Reflector: White color PC film.
- Color: Black, White, Black+white.

### Electrical

Input voltage and frequency: 165-265V, 50-60Hz  
IEC protection class: Class I  
Driver immunity: OVP, LVP  
Rated input power: 10W, 20W, 30W, 60W

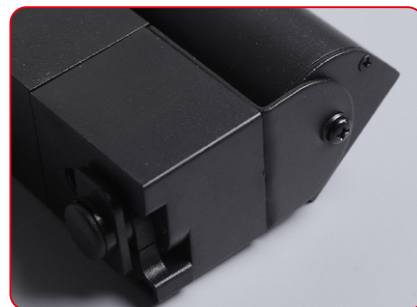
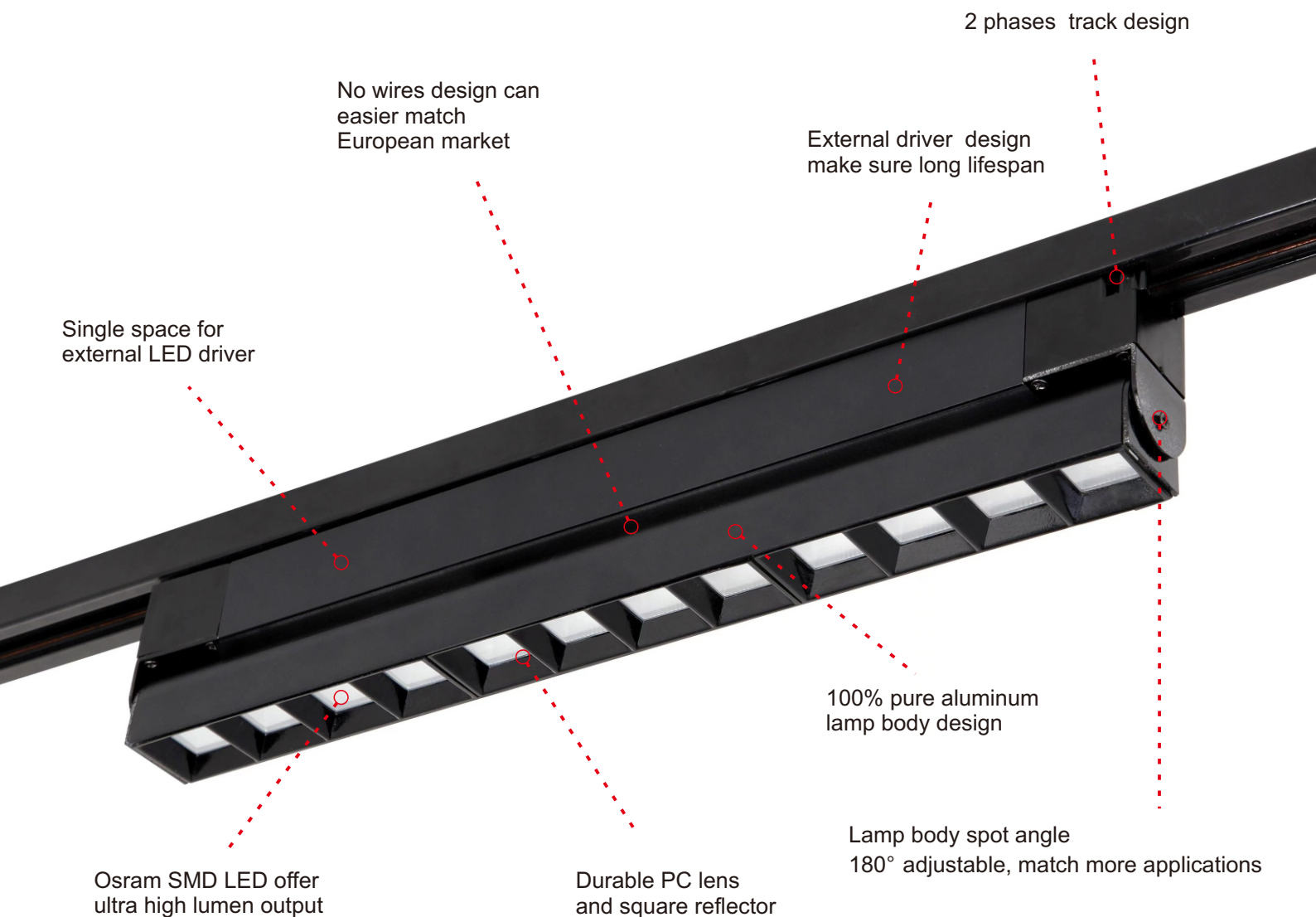
### Optics

Rated color rendering index  $> 80$   
Rated correlated colour temperatures: 2700K, 3000K, 4000K, 5000K, 6500K

Rated initial chromaticity co-ordinate values:

- 2700K: CIE(x=0.4582, y=0.4099) 5SDCM
- 3000K: CIE(x=0.4338, y=0.403) 5SDCM
- 4000K: CIE(x= 0.3818, y= 0.3797) 5SDCM
- 5000K: CIE(x= 0.34, y= 0.35) 5SDCM

## Product introduction





## Adjustable spot angle

WASH offer 180° spot angle for customers to use in varies applications.

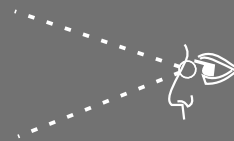


## Square Beam

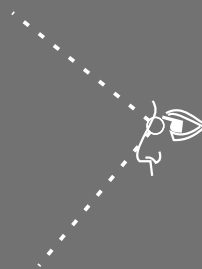
CYBER offer square spot angle can match big arrange key point lighting applications.



Traditional track light



Thelux WASH track light



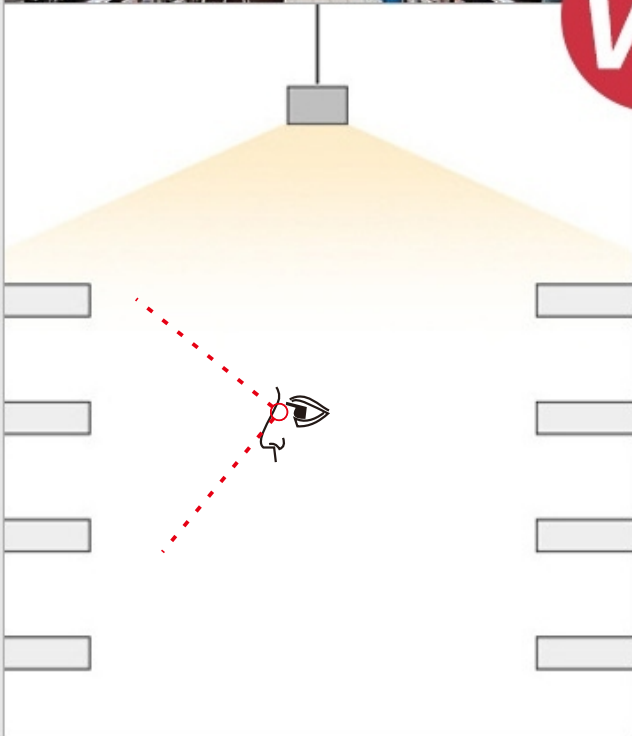
## Low UGR design

Adjustable spot angle can match all kind of shops and market lighting, lower UGR offering ultra comfortable lighting environment.

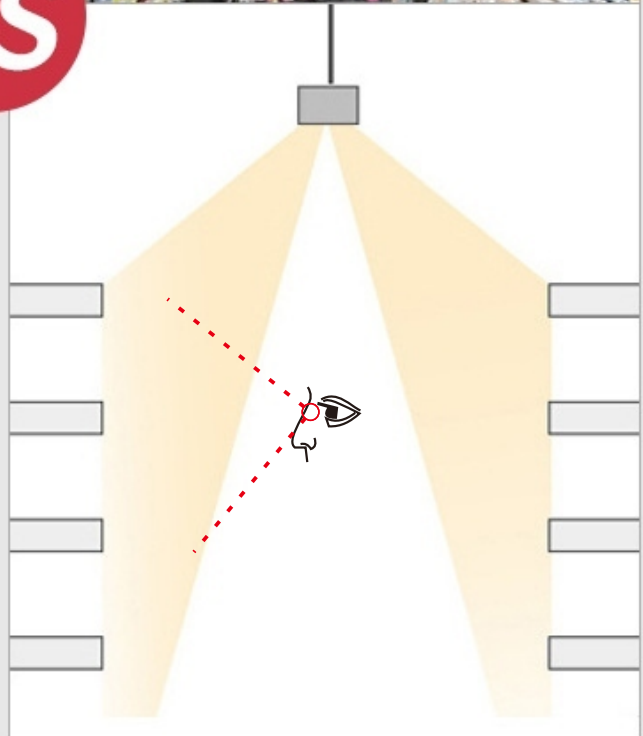
COMFORTABLE →



VS

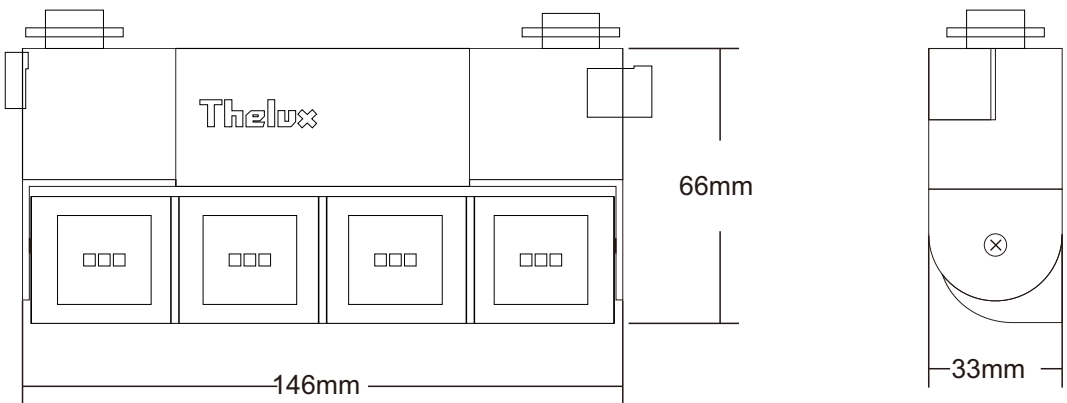


Basic lighting

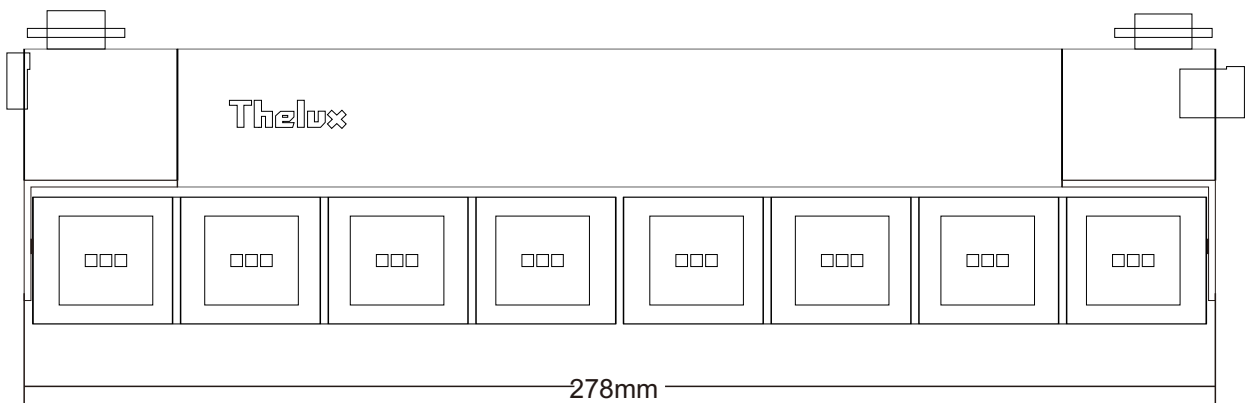


Key point lighting

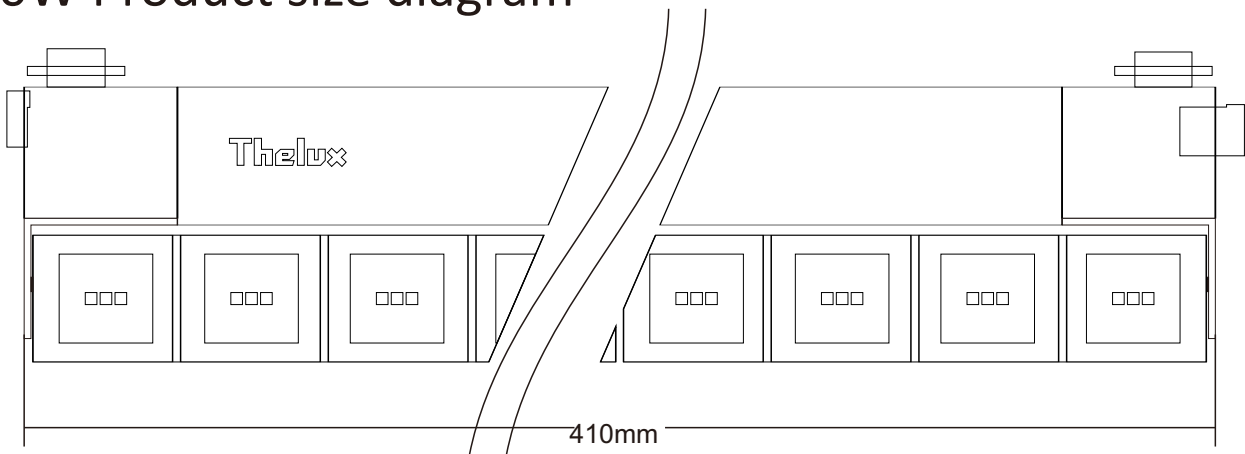
10W Product size diagram



20W Product size diagram



30W Product size diagram







# **Thelux**

FOSHAN THELUX LED LIGHTING CO., LTD.

ADD: Donglian Building, Xingtan Town, Foshan City,  
Guangdong Province, China

Email: [marvin@theluxlighting.com](mailto:marvin@theluxlighting.com)

<http://www.theluxchina.com>

**WASH** series  
TSL-TL037