

Thelux

LED FLOOD LIGHT

TSL-FL005

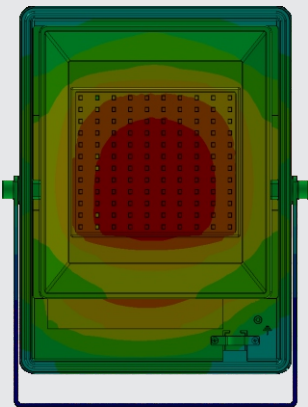


OVERVIEW

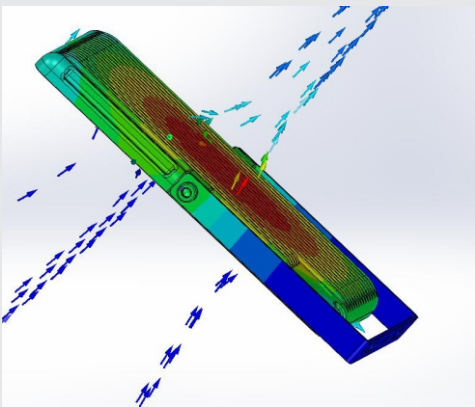
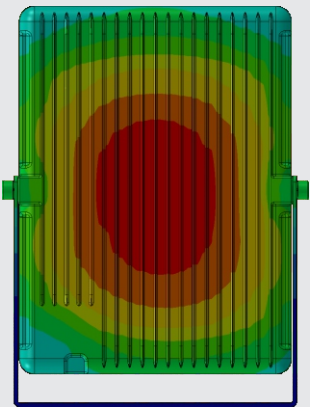


THERMAL MANAGEMENT

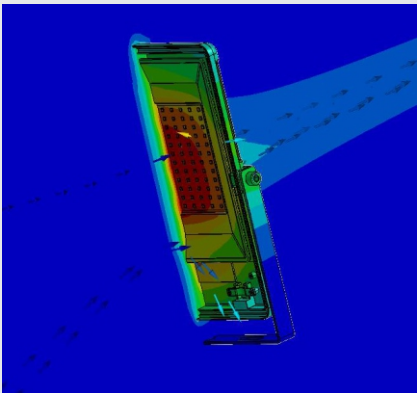
Structure is optimized by advanced FEA technology. Achieving longer lifespan at best cost-efficiency.



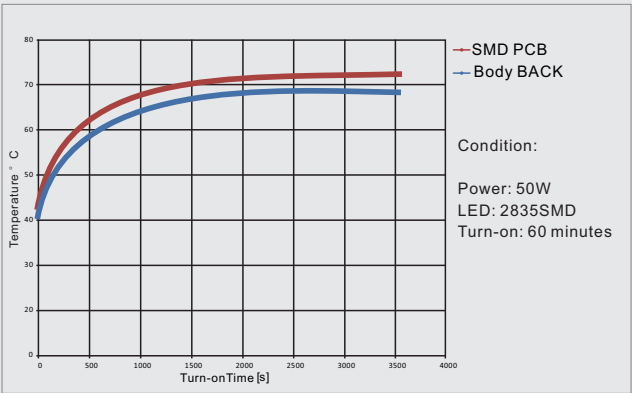
Thermal Conductivity



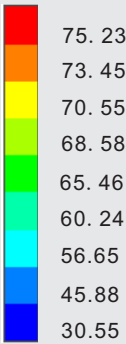
Thermal Air Convection



Thermal Air Flow

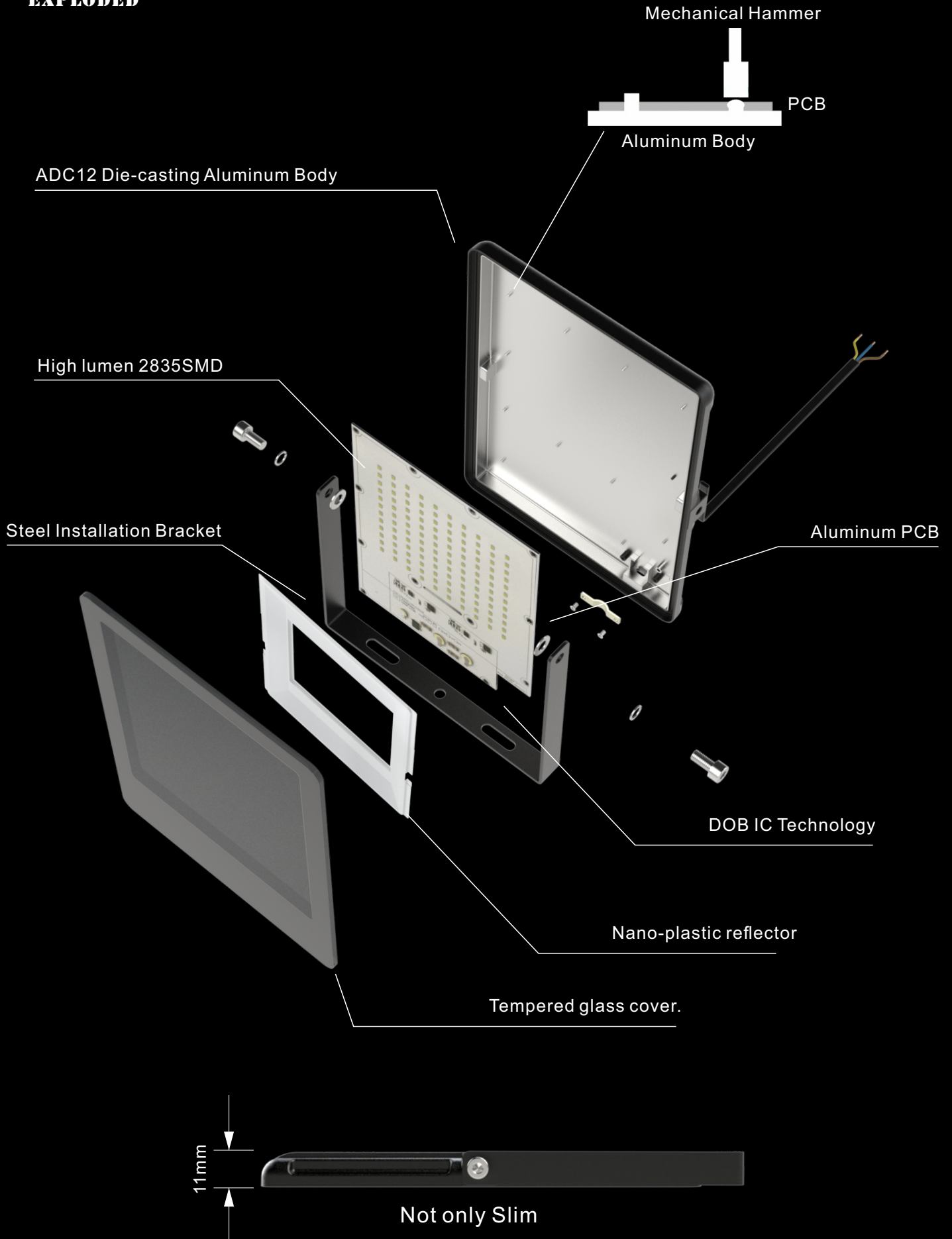


Temperature Rise Curve



Unit: °C

EXPLODED

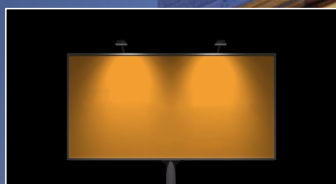


APPLICATIONS

TSL-FL005 LED flood light
Widely Applicable



Bridges



Billboards



Garden



Park

INSTALLATIONS



Wall Mounted



Floor Mounted



Ceiling Mounted

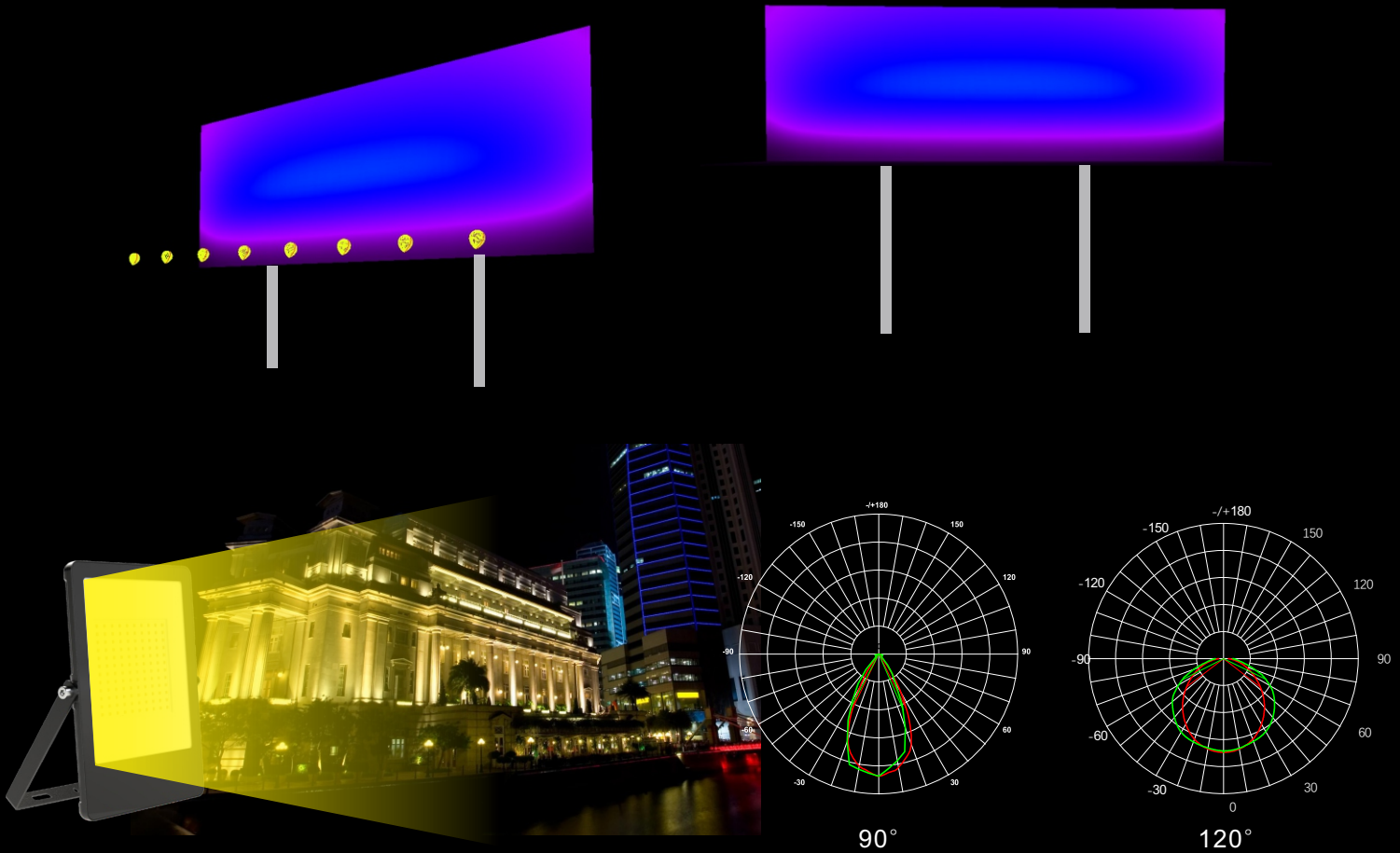


Pole Mounted

OPTICS

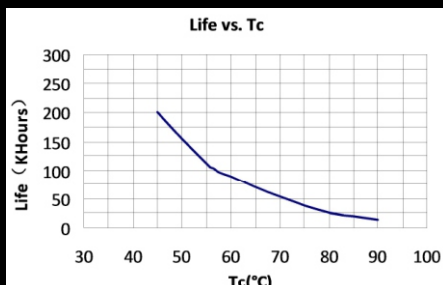
Tech. Support: Tell us the room length, width, height and the usage. We have an engineer team to respond the DIALUX simulations for lights quantity calculation and effects.

.ies files are available upon request.



Lighting Distributions

ELECTRICAL



1 AC230V 50Hz/60Hz

2 PF>0.9

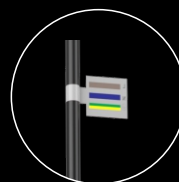
3 THD<15%

4 Surge protection 10KV (SPD)

5 DOB IC Technology.

6 Efficiency>92%, more.
energy-saving.

7 Start time 0.75S.



Brown: L

Blue: N

Yellow& Green: GND

PARAMETERS

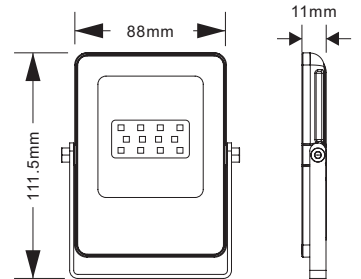
Thelux



TSL-FL005-10W

LED Module: 3030SMD
LED Power: 10W±10%
Product Size: 111.5*88*11mm
Efficacy: 75-80LM/W
LED Initial Flux: 750-800LM Power
Factor: >0.9
Voltage: AC110V/240V 50Hz/60Hz
Beam Angle: 90°/120°

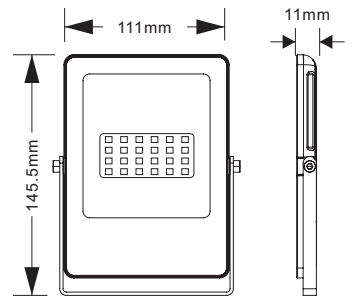
Color Rendering Index: Ra>75-85
IP Grade/ IK Grade: IP65/Ik07
Working Temp: -40°C~ +55°C
Working Life-Span: 30,000H
Connect Wire: Brown/Blue/Yellow
Housing Color: Black / Grey / white
LED Driver: DOB IC Solution



TSL-FL005-20W

LED Module: 2835SMD
LED Power: 20W±10%
Product Size: 145.5*111*11mm
Efficacy: 80-90LM/W
LED Initial Flux: 1600-1800LM Power
Factor: >0.9
Voltage: AC110V/240V 50Hz/60Hz
Beam Angle: 90°/120°

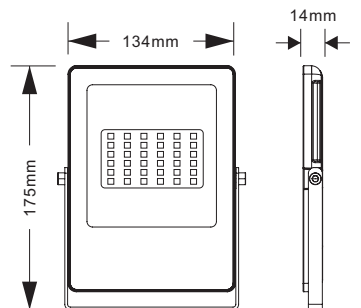
Color Rendering Index: Ra>75-85
IP Grade/ IK Grade: IP65/Ik07
Working Temp: -40°C~ +55°C
Working Life-Span: 30,000H
Connect Wire: Brown/Blue/Yellow
Housing Color: Black / Grey / white
LED Driver: DOB IC Solution



TSL-FL005-30W

LED Module: 2835SMD
LED Power: 30W±10%
Product Size: 175*134*14mm
Efficacy: 80-90LM/W
LED Initial Flux: 2400-2700LM Power
Factor: >0.9
Voltage: AC110V/240V 50Hz/60Hz
Beam Angle: 90°/120°

Color Rendering Index: Ra>75-85
IP Grade/ IK Grade: IP65/Ik07
Working Temp: -40°C~ +55°C
Working Life-Span: 30,000H
Connect Wire: Brown/Blue/Yellow
Housing Color: Black / Grey / white
LED Driver: DOB IC Solution



OPTIONS



Light Control Sensor
Radar Sensor



Reflector
Flat/ Honeycomb



Glass
Clear/Textured



Body
Black/White



CCT
3000K/4000K/6500K/RGB

PARAMETERS

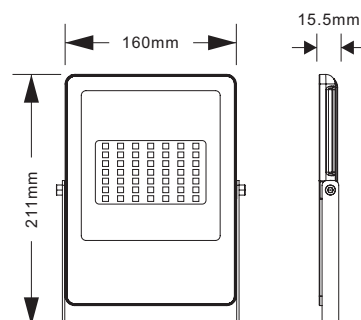
Thelux



TSL-FL005-50W

LED Module: 2835SMD
LED Power: 50W±10%
Product Size: 211*160*15.5mm
Efficacy: 90-100LM/W
LED Initial Flux: 4500-5000LM
Power Factor: >0.9
Voltage: AC110V/240V 50Hz/60Hz
Beam Angle: 90°/120°

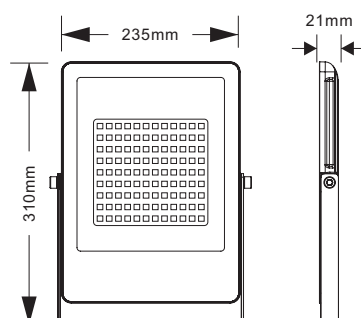
Color Rendering Index: Ra>75-85
IP Grade/ IK Grade: IP65/Ik07
Working Temp: -40°C~ +55°C
Working Life-Span: 30,000H
Connect Wire: Brown/Blue/Yellow
Housing Color: Black / Grey / white
LED Driver: DOB IC Solution



TSL-FL005-100W

LED Module: 2835SMD
LED Power: 100W±10%
Product Size: 310*235*21mm
Efficacy: 90-100LM/W
LED Initial Flux: 90000-10000LM
Power Factor: >0.9
Voltage: AC110V/240V 50Hz/60Hz
Beam Angle: 90° 120°

IP Grade/ IK Grade: IP65/Ik07
Working Temp: -40°C~ +55°C
Working Life-Span: 30,000H
Connect Wire: Brown/Blue/Yellow
Housing Color: Black / Grey / white
LED Driver: DOB IC Solution



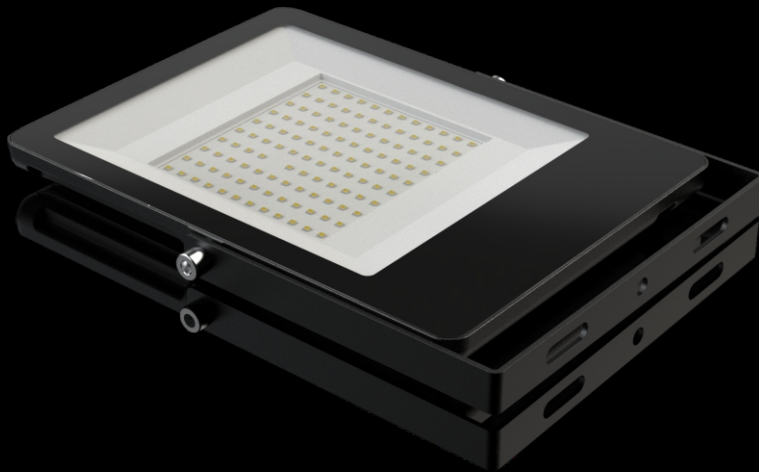
COLOR BOX PACKING INFORMATION

Item	Inner box size	Qty/box	Qty/carton	Carton size	Product Weight	Weight (N.W)	Weight (G.W)
TSL-FL005/10	10x1.8x13cm	1pcs	80pcs	40*22*27.5cm/0.024m³	0.16kg	13.4kg	14.0kg
TSL-FL005/20	12.5x1.8x16.5cm	1pcs	60pcs	40*39.5*18cm/0.028m³	0.25kg	15.6kg	16.2kg
TSL-FL005/30	15x2x19cm	1pcs	40pcs	44*32*20.5cm/0.029m³	0.43kg	17.5kg	18.0kg
TSL-FL005/50	17.5x2.2x23cm	1pcs	24pcs	37*29.5*24.5cm/0.027m³	0.62kg	14.6kg	16.2kg
TSL-FL005/100	24x2.5x32cm	1pcs	10pcs	28*25.5*33.5cm/0.024m³	1.37kg	14.2kg	14.9kg

BLISTER PACKING INFORMATION



Item	Qty/box	Qty/carton	Carton size	Product Weight	Weight (N.W)	Weight (G.W)
TSL-FL005/10	1pcs	50pcs	53*21.5*17.5cm/0.02 m³	0.16kg	9.5kg	9.85kg
TSL-FL005/20	1pcs	50pcs	53*36.5*15cm/0.029m³	0.25kg	13.5kg	13.9kg
TSL-FL005/30	1pcs	30pcs	42*36*17cm/0.027m³	0.43kg	13.8kg	14.2kg
TSL-FL005/50	1pcs	20pcs	49.5*27.5*19.5cm/0.02m³	0.62kg	13.2kg	13.6kg
TSL-FL005/100	1pcs	10pcs	36*35*26.5cm/0.032m³	1.37kg	14.2kg	14.8kg



FEATURES

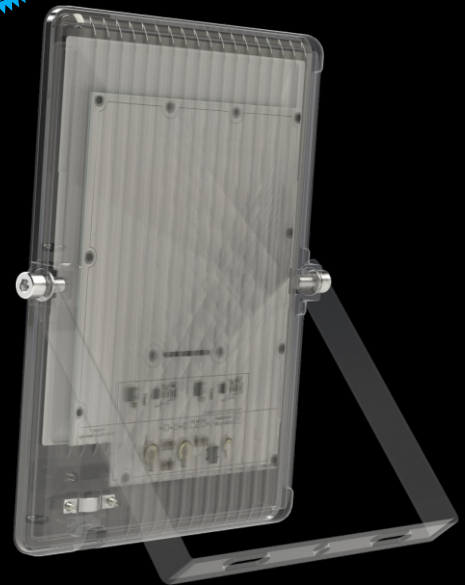
1. AC110&230V 50/60Hz.
2. Lighting efficacy up to 100lm/W.
3. Famous brand 2835SMD light source.
4. PF>0.9, THD<25%.
6. Die-casting aluminum body.
- Anti-corrosion powder painting.
7. IP65 Waterproof for outdoor use.
8. 2 years warranty.
9. Export certificates are available.

CAUTIONS:

1. Installation must be done by professional electricians. .
2. Do NOT take apart the product. It may be dangerous.
3. Do NOT stare at the light with naked eyes. It is harmful to eyes.
4. For outdoor lighting, waterproof measurements must be done to the cable terminals.

WARRANTY:

1. All LED Flood Lights are warranted by the manufacturer to be free of defects in material and workmanship for 2 years.
2. Warranty becomes void if the products is modified, improperly installed or used, damaged by accident or neglect, or if any parts are improperly installed or replaced by the user,
3. During the period of warranty time, if some products of us fails during normal circumstances and applications or have any defects above defined, we shall at our own choice replace or repair the defective products at no charge. And the liability claims would NOT exceed the value of the product itself.



FOSHAN THELUX LED LIGHTING CO., LTD.

Email: vip@theluxlighting.com

<http://www.theluxchina.com> www.theluxlighting.com

Add: 9th floor, Donglian Building, Xingtan Town, Shunde District, Foshan City, Guangdong, P. R. China.