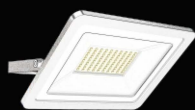


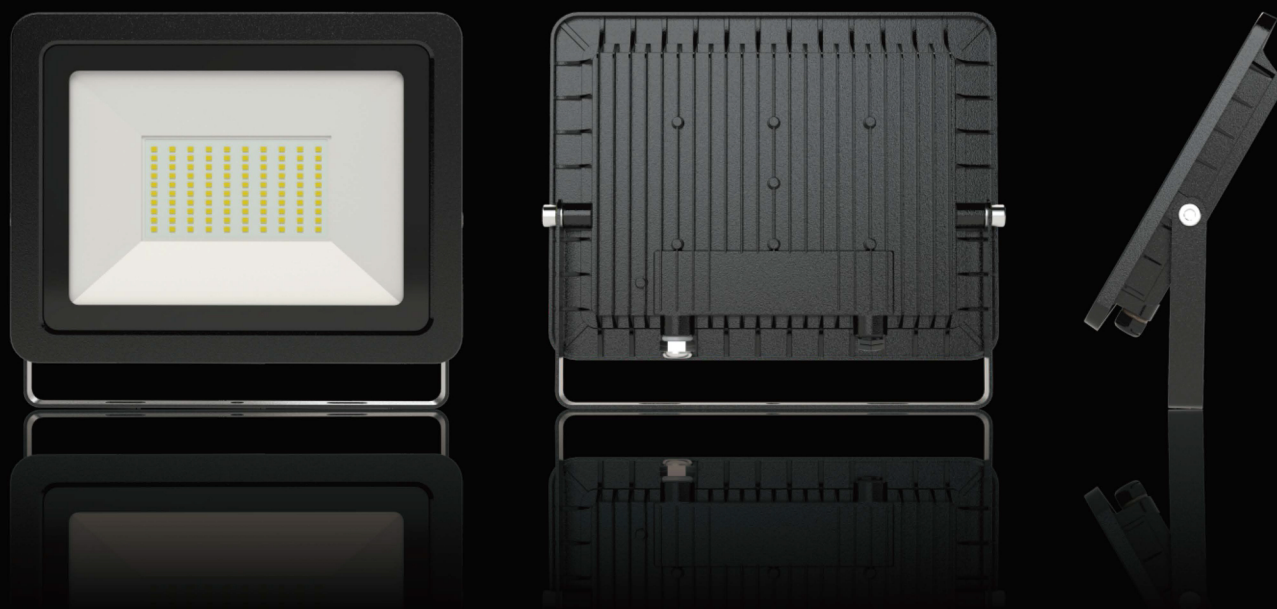
Thelux

LED FLOOD LIGHT

TSL-FL004

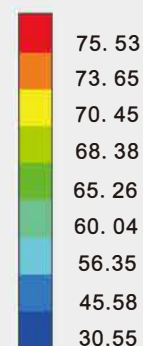
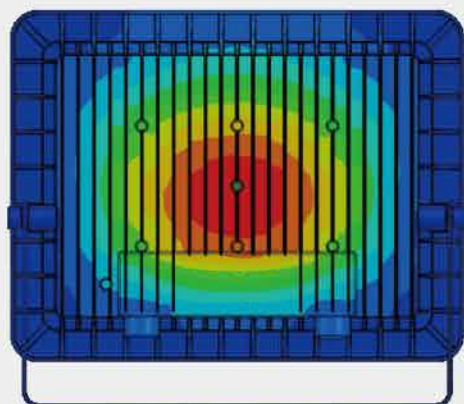
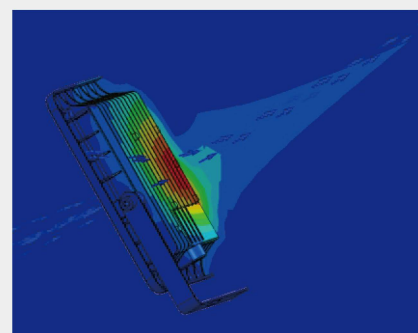
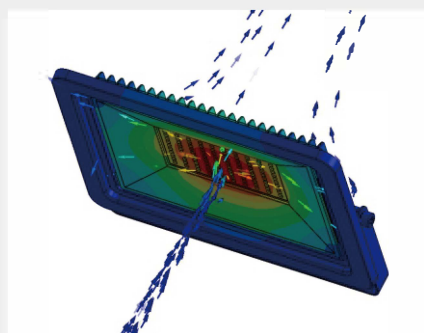
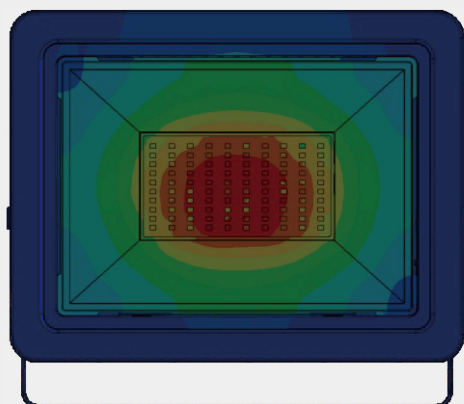


OVERVIEW



THERMAL MANAGEMENT

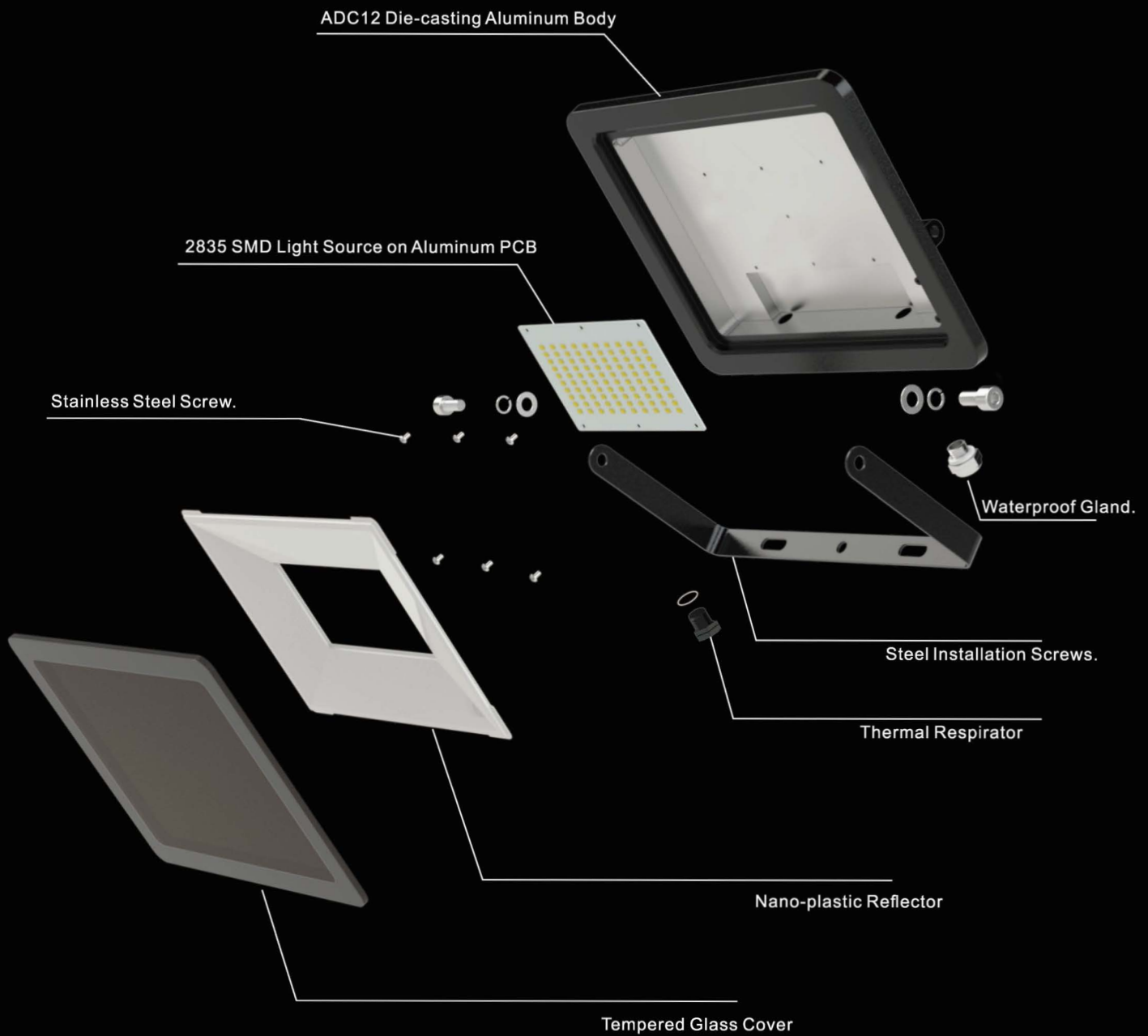
Structure is optimized by advanced FEA technology. Achieving longer lifespan at best cost-efficiency.



Unit: °C

Temperature Rise Curve

EXPLODED



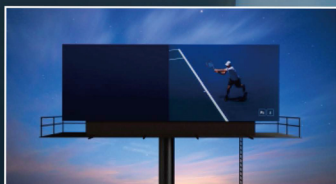
APPLICATIONS

Widely Applicable

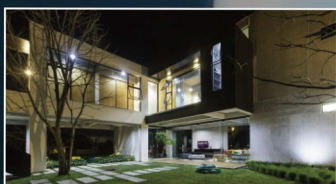
to indoor and outdoor locations.
IP65 waterproof. Suitable for
sports centers, bridges,
billboards, villa, outdoor walls
and park lighting. Installation
methods available are on floor,
on ceiling, on wall or on high mast.



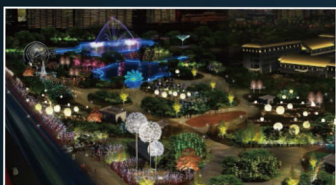
Bridges



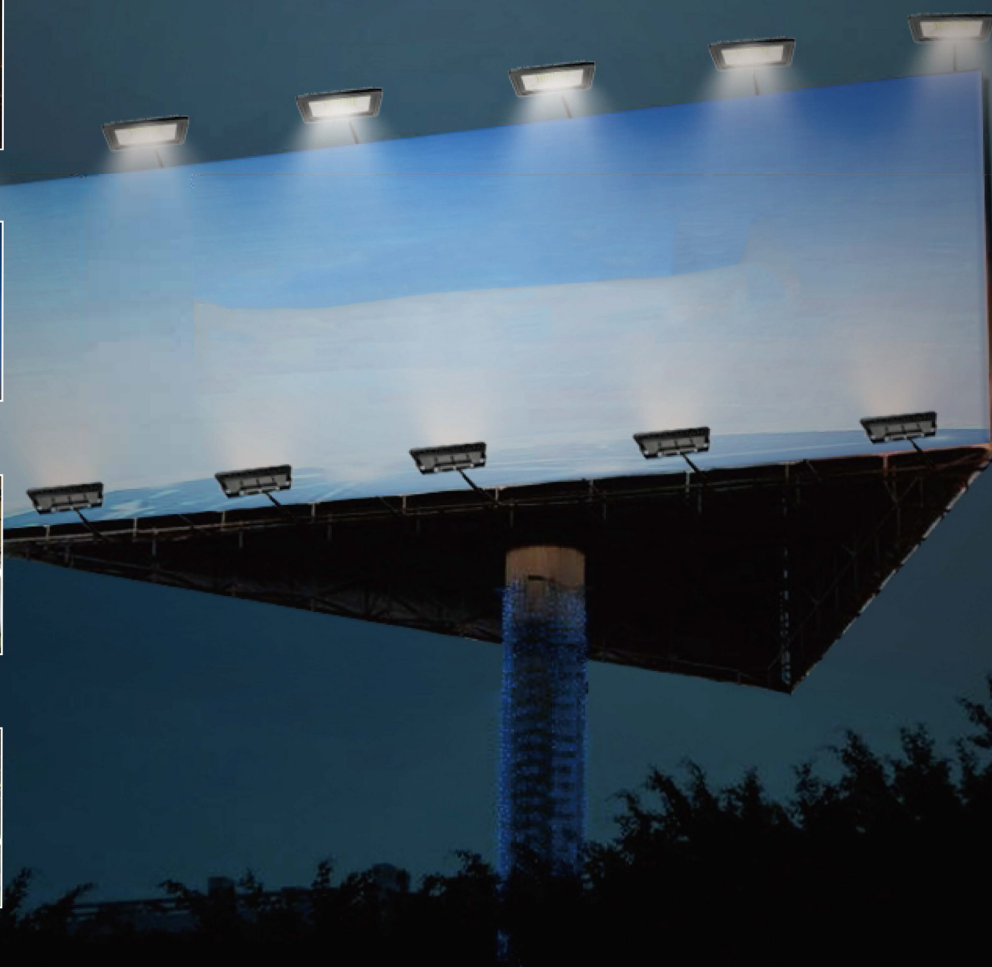
Billboards



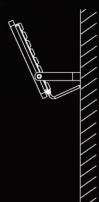
Garden



Park



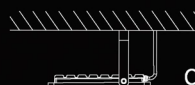
INSTALLATIONS



Wall Mounted



Floor Mounted



Ceiling Mounted

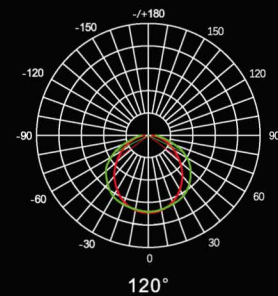
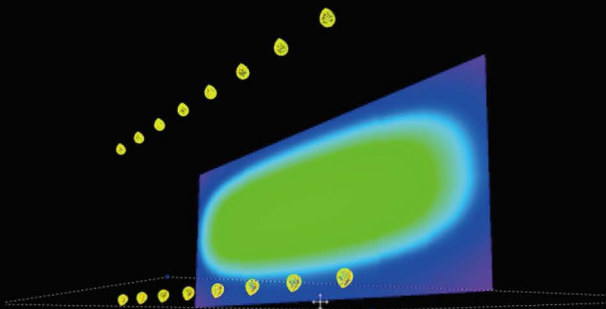
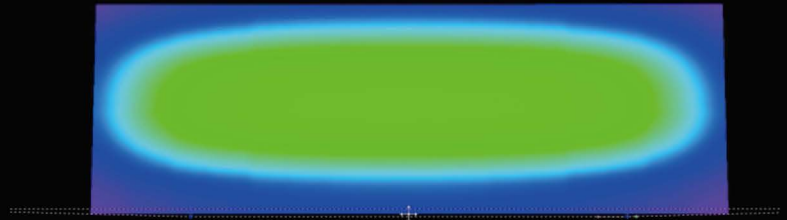
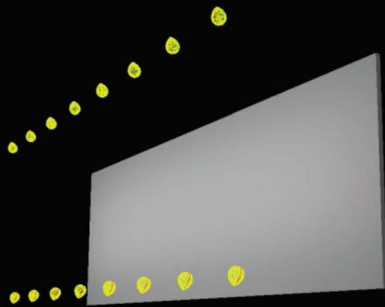


Pole Mounted

OPTICS

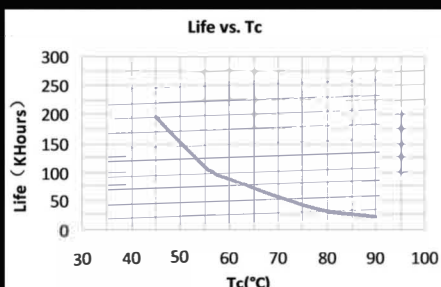
Tech. Support: Tell us the room length, width, height and the usage. We have an engineer team to respond the DIALUX simulations for lights quantity calculation and effects.

.ies files are available upon request.



Lighting Distributions

ELECTRICAL



1 AC230V 50Hz/60Hz

2 PF>0.9

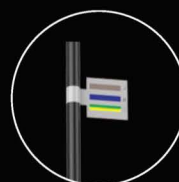
3 THD<15%

4 Surge protection 10KV (SPD)

5 DOB IC Technology.

6 Efficiency>92%, more.
energy-saving.

7 Start time 0.75S.



Brown: L

Blue: N

Yellow & Green: GND

PARAMETERS

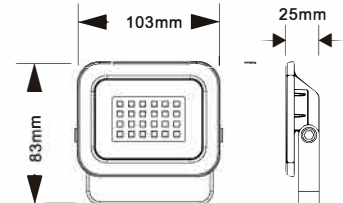
Thelux



TSL-FL004/10W

LED Module: 2835SMD
LED Power: 10W±5%
Product Size: 103*83*25mm
Efficacy: 75-80LM/W
LED Initial Flux: 750-800LM
Power Factor: >0.9
Voltage: AC110V&240V 50Hz/60Hz
Beam Angle: 120°

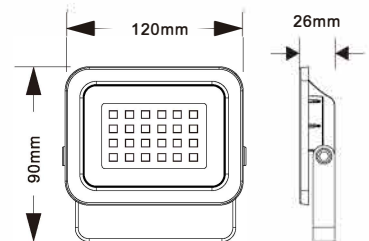
Color Rendering Index: Ra>75-85
IP Grade/ IK Grade: IP65/IK07
Working Temp: -40°C ~ +55°C
Working Life-Span: 30,000H
Connect Wire: Brown/Blue/Yellow
Housing Color: Black / Grey
LED Driver: DOB IC Solution



TSL-FL004/20W

LED Module 2835SMD
LED Power 20W±5%
Product Size 120*95*26mm
Efficacy 75-BOLM/W
LED Initial Flux 1500-1600LM
Power Factor >0.9
Voltage AC120&230V 50Hz/60Hz
BeamAngle 120

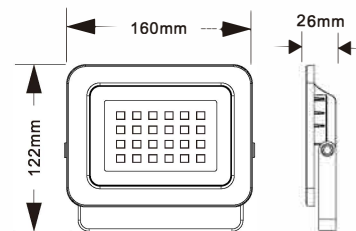
Color Rendering Index: Ra>75-85
IP Grade/ IK Grade: IP65/IK07
Working Temp: -40°C ~ +55°C
Working Life-Span: 30,000H
Connect Wire: Brown/Blue/Yellow
Housing Color: Black / Grey
LED Driver: DOB IC Solution



TSL-FL004/30W

LED Module 2835SMD LED
Power 30W±5%
Product Size 160*122*26mm
Efficacy 80-90LM/W
LED Initial Flux 2400-2700LM
Power Factor >0.9
Voltage: AC110V&240V 50Hz/60Hz
Beam Angle: 120°

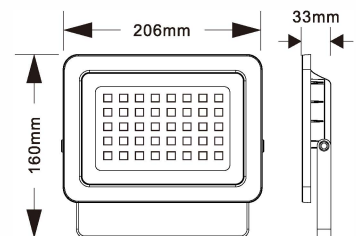
Color Rendering Index: Ra>75-85
IP Grade/ IK Grade: IP65/IK07
Working Temp: -40°C ~ +55°C
Working Life-Span: 30,000H
Connect Wire: Brown/Blue/Yellow
Housing Color: Black / Grey
LED Driver: DOB IC Solution



TSL-FL004/50W

LED Module: 2835SMD
LED Power: 50W±5%
Product Size: 206*160*33mm
Efficacy: 90-100LM/W
LED Initial Flux: 4500-5000LM
Power Factor: >0.9
Voltage: AC110V&240V 50Hz/60Hz
Beam Angle: 120°

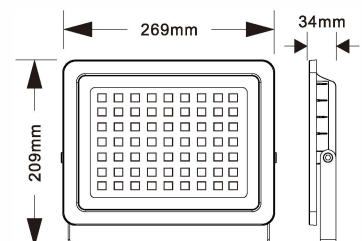
Color Rendering Index: Ra>75-85
IP Grade/ IK Grade: IP65/IK07
Working Temp: -40°C ~ +55°C
Working Life-Span: 30,000H
Connect Wire: Brown/Blue/Yellow
Housing Color: Black / Grey
LED Driver: DOB IC Solution



TSL-FL004/100W

LED Module: 2835SMD
LED Power: 100W±10%
Product Size: 269*209*34mm
Efficacy: 90-100LM/W
LED Initial Flux: 9000-10000LM
Power Factor: >0.9
Voltage: AC110V&240V 50Hz/60Hz
Beam Angle: 120°

Color Rendering Index: Ra>75-85
IP Grade/ IK Grade: IP65/IK07
Working Temp: -40°C ~ +55°C
Working Life-Span: 30,000H
Connect Wire: Brown/Blue/Yellow
Housing Color: Black / Grey
LED Driver: DOB IC Solution



PARAMETERS

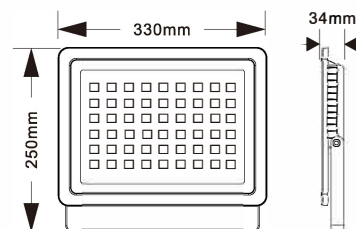
Thelux



TSL-FL004/150

LED Module: 2835SMD
LED Power: 150W±10%
Product Size: 330*250*34mm
Efficacy: 90-100LM/W
LED Initial Flux: 13500-15000LM
Power Factor: >0.9
Voltage: AC110V&240V 50Hz/60Hz
BeamAngle: 120°

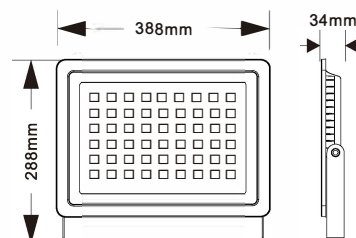
Color Rendering Index: Ra>75-85
IP Grade/ IK Grade: IP65/Ik07
Working Temp: -40°C- +55°C
Working Life-Span: 30,000H
Connect Wire: Brown/Blue/
Yellow Housing Color: Black/
Grey
LED Driver: DOB IC Solution



TSL-FL004/200

LED Module: 2835SMD
LED Power: 200W±10%
Product Size: 388*288*36mm
Efficacy: 90-100LM/W
LED Initial Flux: 19000-20000LM
Power Factor: >0.9
Voltage: AC110V&240V 50Hz/60Hz
BeamAngle: 120°

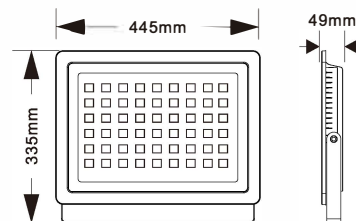
Color Rendering Index: Ra>75-85
IP Grade/ IK Grade: IP65/Ik07
Working Temp: -40°C- +55°C
Working Life-Span: 30,000H
Connect Wire: Brown/Blue/
Yellow Housing Color: Black/
Grey
LED Driver: DOB IC Solution



TSL-FL004/300

LED Module: 2835SMD
LED Power: 300W±10%
Product Size: 445*335*45mm
Efficacy: 90-100LM/W
LED Initial Flux: 28500-30000LM
Power Factor: >0.9
Voltage: AC110V&240V 50Hz/60Hz
BeamAngle: 120°

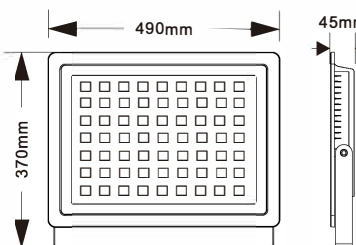
Color Rendering Index: Ra>75-85
IP Grade/ IK Grade: IP65/Ik07
Working Temp: -40°C- +55°C
Working Life-Span: 30,000H
Connect Wire: Brown/Blue/
Yellow Housing Color: Black/
Grey
LED Driver: DOB IC Solution



TSL-FL004/400

LED Module: 2835SMD
LED Power: 400W±10%
Product Size: 490*370*49mm
Efficacy: 90-100LM/W
LED Initial Flux: 36000-40000LM
Power Factor: >0.9
Voltage: AC110V&240V 50Hz/60Hz
BeamAngle: 120°

Color Rendering Index: Ra>75-85
IP Grade/ IK Grade: IP65/Ik07
Working Temp: -40°C- +55°C
Working Life-Span: 30,000H
Connect Wire: Brown/Blue/
Yellow Housing Color: Black/
Grey
LED Driver: DOB IC Solution



COLOR BOX PACKING INFORMATION

Item	Inner box size	Qty/box	Qty/carton	Carton size	Product Weight	Weight (N.W)	Weight (G.W)
TSL-FL004/10	11.5x3x12cm	1pcs	60pcs/0.032m³	36.5*34*26cm	0.14kg	9.4kg	11.0kg
TSL-FL004/20	13x3x12.5cm	1pcs	40pcs/0.026m³	34*28*27cm	0.2kg	10.0kg	11.5kg
TSL-FL004/30	16.5x3x15cm	1pcs	40pcs/0.038m³	35*34*32cm	0.33kg	12.0kg	13.2kg
TSL-FL004/50	22x3.5x18cm	1pcs	20pcs/0.036m³	46*39*20cm	0.61kg	11.0kg	12.0kg
TSL-FL004/100	28.5x3.8x24cm	1pcs	10pcs/0.033m³	42*30.5*26cm	1.3kg	15.0kg	16.2kg
TSL-FL004/150	33.5x3.8x25.8cm	1pcs	5pcs/0.021m³	35*22*27.5cm	2.2kg	12.0kg	13.2kg
TSL-FL004/200	40x6x32cm	1pcs	5pcs/0.047m³	42*33*34cm	3.2kg	14.0kg	15.7kg
TSL-FL004/300	46.5x6x37cm	1pcs	4pcs/0.049m³	48.5*26*39cm	3.8kg	15.2kg	16.0kg
TSL-FL004/400	55x43.5x11.5cm	1pcs	1pcs/0.028m³	55*43.5*11.5cm	5.4kg	5.85kg	6.30kg



Features

1. AC110V/240V 50Hz/60Hz
2. Lighting efficacy up to 100lm/W.
3. Famous brand 2835SMD light source.
4. PF>0.9, THD<25%.
6. Die-casting aluminum body.
- Anti-corrosion powder painting.
7. IP65 Waterproof for outdoor use.
8. 2 years warranty.
9. Export certificates are available.

CAUTIONS:

1. Installation must be done by professional electricians.
2. Do NOT take apart the product. It may be dangerous.
3. Do NOT stare at the light with naked eyes. It is harmful to eyes.
4. For outdoor lighting, waterproof measurements must be done to the cable terminals.



WARRANTY:

1. All LED Flood Lights are warranted by the manufacturer to be free of defects in material and workmanship for 2 years.
2. Warranty becomes void if the products is modified, improperly installed or used, damaged by accident or neglect, or if any parts are improperly installed or replaced by the user,
3. During the period of warranty time, if some products of us fails during normal circumstances and applications or have any defects above defined, we shall at our own choice replace or repair the defective products at no charge. And the liability claims would NOT exceed the value of the product itself.



FOSHAN THELUX LED LIGHTING CO., LTD.

Email: vip@theluxlighting.com

<http://www.theluxchina.com> www.theluxlighting.com

Add: 9th floor, Donglian Building, Xingtan Town, Shunde District, Foshan City, Guangdong, P. R. China.