

# **Thelux**

## **LED FLOOD LIGHT**

---

TSL-FL005

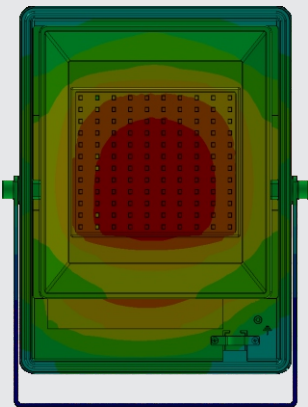


OVERVIEW

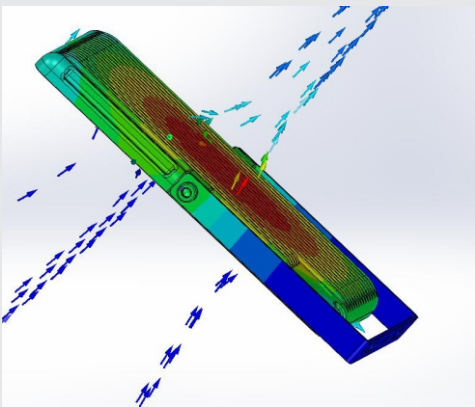
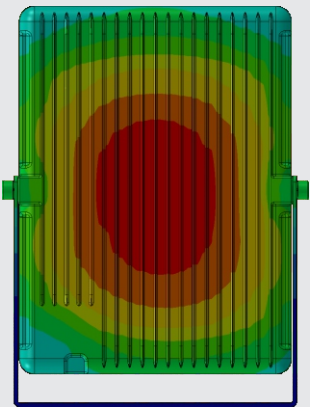


THERMAL MANAGEMENT

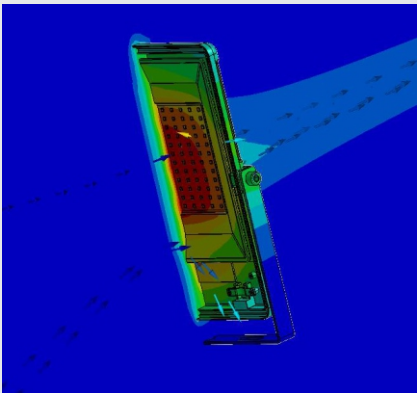
Structure is optimized by advanced FEA technology. Achieving longer lifespan at best cost-efficiency.



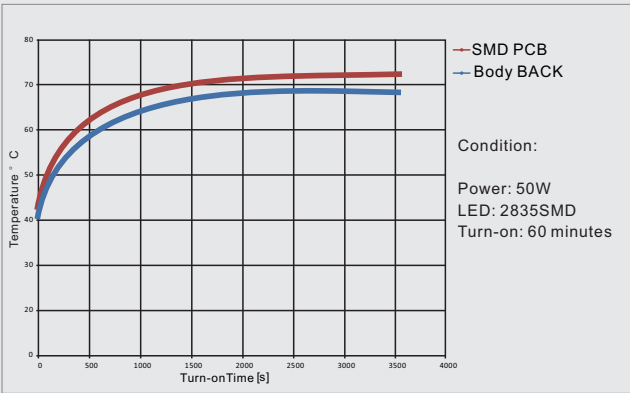
Thermal Conductivity



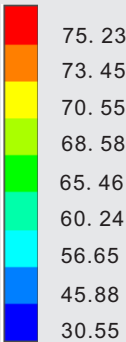
Thermal Air Convection



Thermal Air Flow

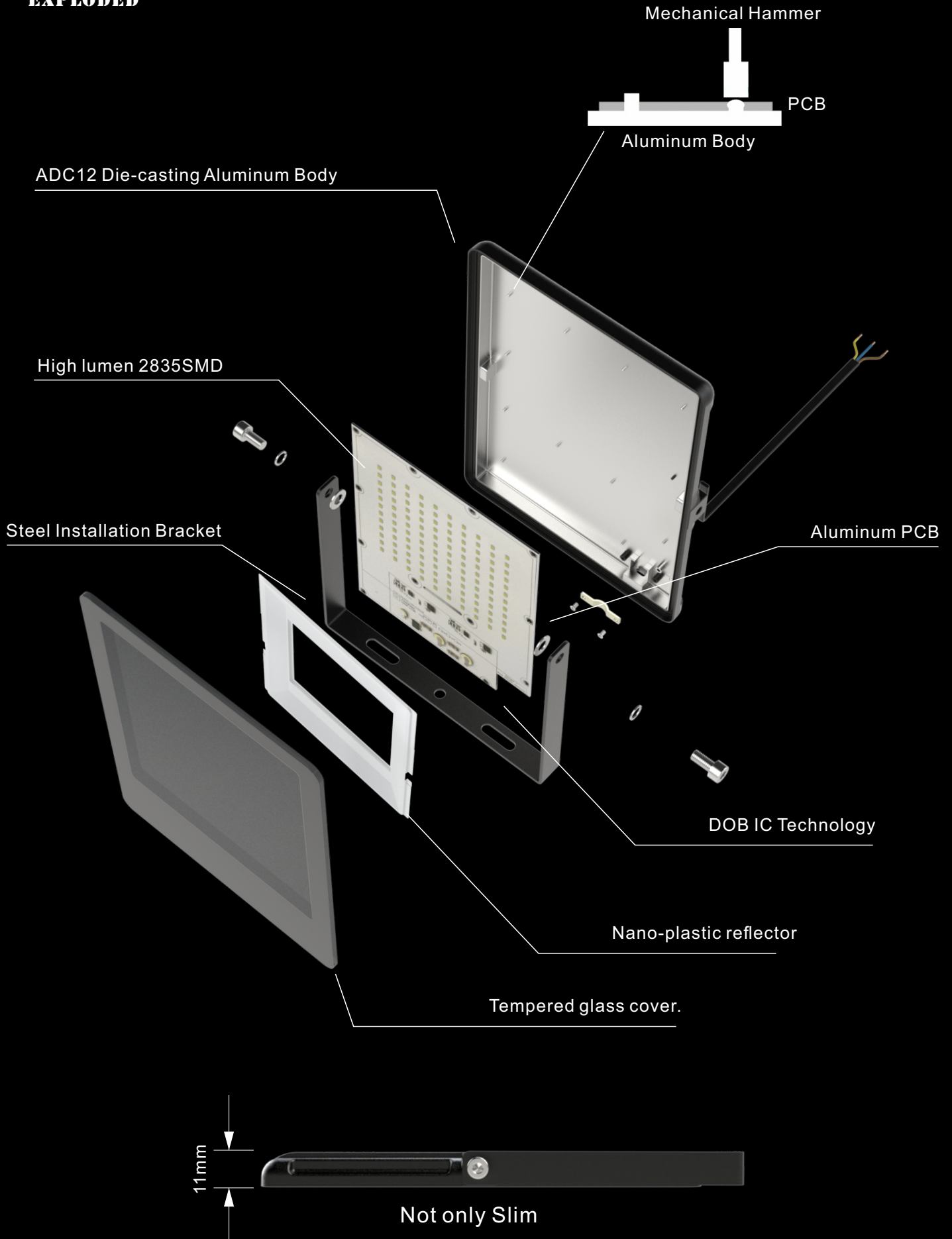


Temperature Rise Curve



Unit: °C

## EXPLODED



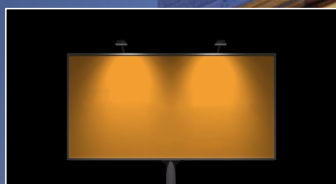


## APPLICATIONS

TSL-FL005 LED flood light  
Widely Applicable



Bridges



Billboards



Garden



Park

## INSTALLATIONS



Wall Mounted



Floor Mounted



Ceiling Mounted



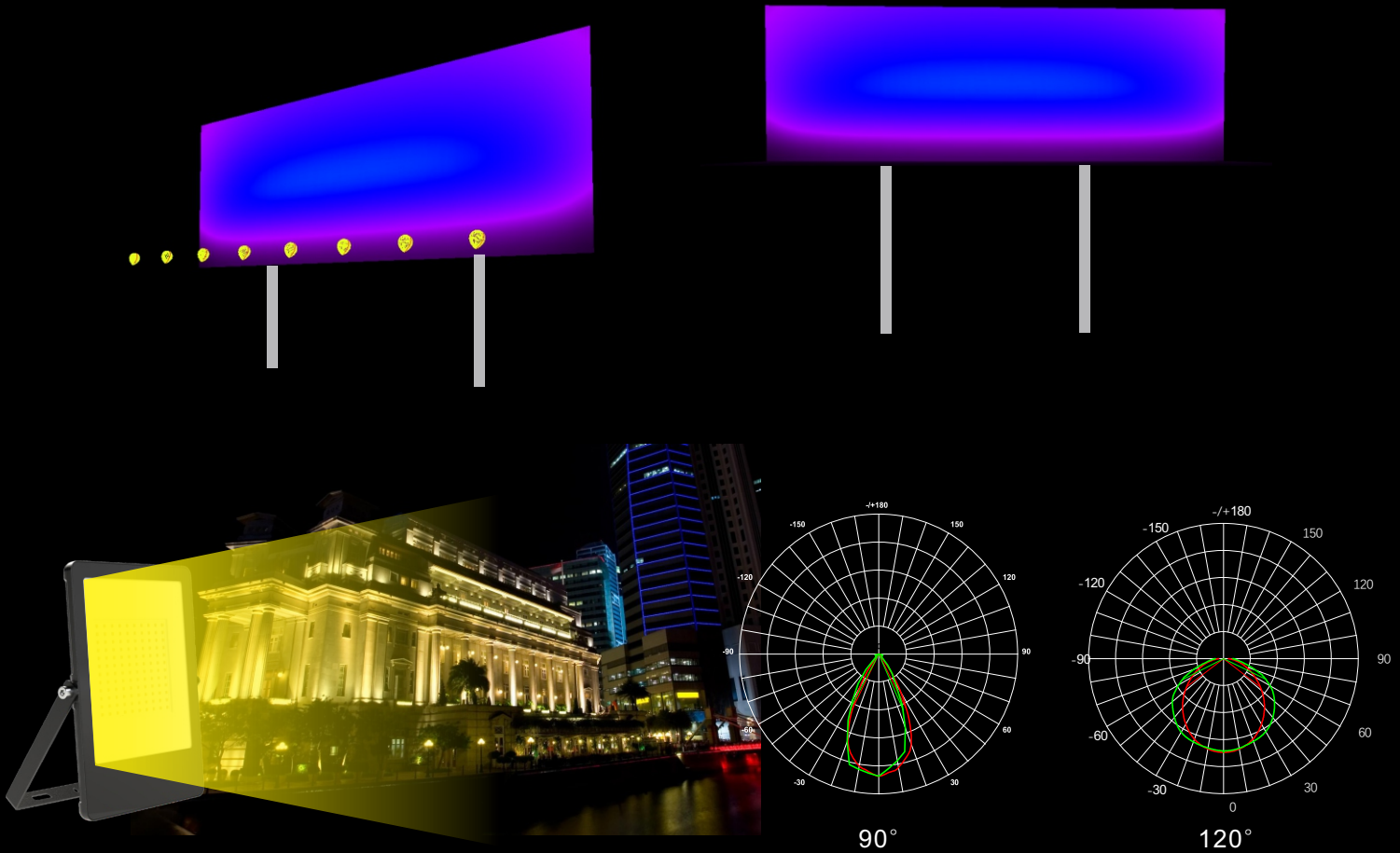
Pole Mounted



## OPTICS

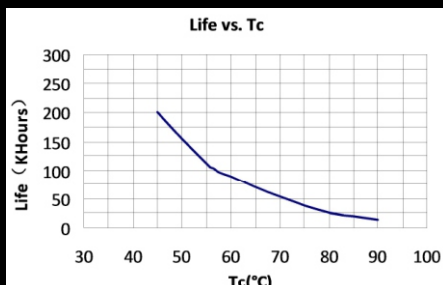
Tech. Support: Tell us the room length, width, height and the usage. We have an engineer team to respond the DIALUX simulations for lights quantity calculation and effects.

.ies files are available upon request.



Lighting Distributions

## ELECTRICAL



1 AC230V 50Hz/60Hz

2 PF>0.9

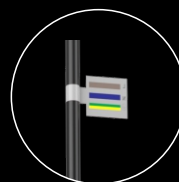
3 THD<15%

4 Surge protection 10KV (SPD)

5 DOB IC Technology.

6 Efficiency>92%, more.  
energy-saving.

7 Start time 0.75S.



Brown: L

Blue: N

Yellow& Green: GND

# PARAMETERS

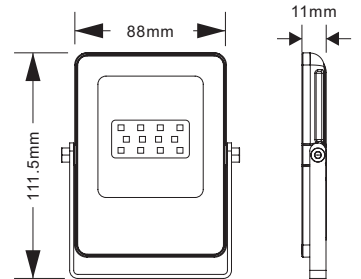
**Thelux**



## TSL-FL005-10W

LED Module: 3030SMD  
LED Power: 10W±10%  
Product Size: 111.5\*88\*11mm  
Efficacy: 75-80LM/W  
LED Initial Flux: 750-800LM Power  
Factor: >0.9  
Voltage: AC110V/240V 50Hz/60Hz  
Beam Angle: 90°/120°

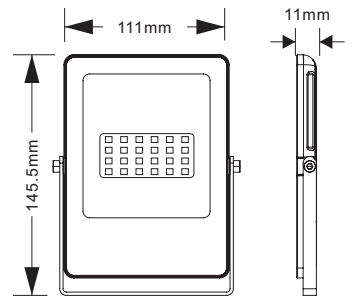
Color Rendering Index: Ra>75-85  
IP Grade/ IK Grade: IP65/Ik07  
Working Temp: -40°C~ +55°C  
Working Life-Span: 30,000H  
Connect Wire: Brown/Blue/Yellow  
Housing Color: Black / Grey / white  
LED Driver: DOB IC Solution



## TSL-FL005-20W

LED Module: 2835SMD  
LED Power: 20W±10%  
Product Size: 145.5\*111\*11mm  
Efficacy: 80-90LM/W  
LED Initial Flux: 1600-1800LM Power  
Factor: >0.9  
Voltage: AC110V/240V 50Hz/60Hz  
Beam Angle: 90°/120°

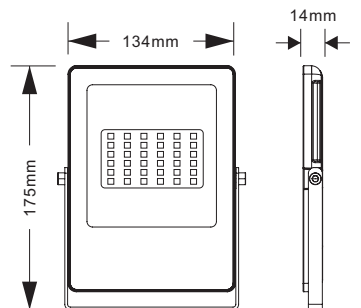
Color Rendering Index: Ra>75-85  
IP Grade/ IK Grade: IP65/Ik07  
Working Temp: -40°C~ +55°C  
Working Life-Span: 30,000H  
Connect Wire: Brown/Blue/Yellow  
Housing Color: Black / Grey / white  
LED Driver: DOB IC Solution



## TSL-FL005-30W

LED Module: 2835SMD  
LED Power: 30W±10%  
Product Size: 175\*134\*14mm  
Efficacy: 80-90LM/W  
LED Initial Flux: 2400-2700LM Power  
Factor: >0.9  
Voltage: AC110V/240V 50Hz/60Hz  
Beam Angle: 90°/120°

Color Rendering Index: Ra>75-85  
IP Grade/ IK Grade: IP65/Ik07  
Working Temp: -40°C~ +55°C  
Working Life-Span: 30,000H  
Connect Wire: Brown/Blue/Yellow  
Housing Color: Black / Grey / white  
LED Driver: DOB IC Solution



# OPTIONS



Light Control Sensor  
Radar Sensor



Reflector  
Flat/ Honeycomb



Glass  
Clear/Textured



Body  
Black/White



CCT  
3000K/4000K/6500K/RGB



## PARAMETERS

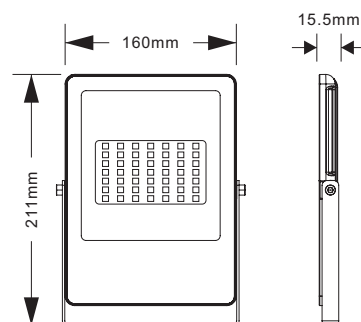
**Thelux**



### TSL-FL005-50W

LED Module: 2835SMD  
LED Power: 50W±10%  
Product Size: 211\*160\*15.5mm  
Efficacy: 90-100LM/W  
LED Initial Flux: 4500-5000LM  
Power Factor: >0.9  
Voltage: AC110V/240V 50Hz/60Hz  
Beam Angle: 90°/120°

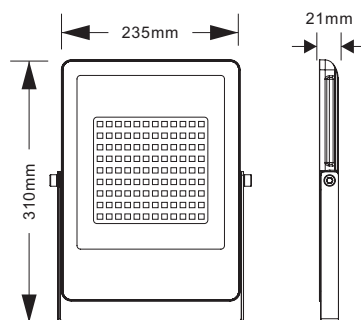
Color Rendering Index: Ra>75-85  
IP Grade/ IK Grade: IP65/Ik07  
Working Temp: -40°C~ +55°C  
Working Life-Span: 30,000H  
Connect Wire: Brown/Blue/Yellow  
Housing Color: Black / Grey / white  
LED Driver: DOB IC Solution



### TSL-FL005-100W

LED Module: 2835SMD  
LED Power: 100W±10%  
Product Size: 310\*235\*21mm  
Efficacy: 90-100LM/W  
LED Initial Flux: 90000-10000LM  
Power Factor: >0.9  
Voltage: AC110V/240V 50Hz/60Hz  
Beam Angle: 90° 120°

IP Grade/ IK Grade: IP65/Ik07  
Working Temp: -40°C~ +55°C  
Working Life-Span: 30,000H  
Connect Wire: Brown/Blue/Yellow  
Housing Color: Black / Grey / white  
LED Driver: DOB IC Solution



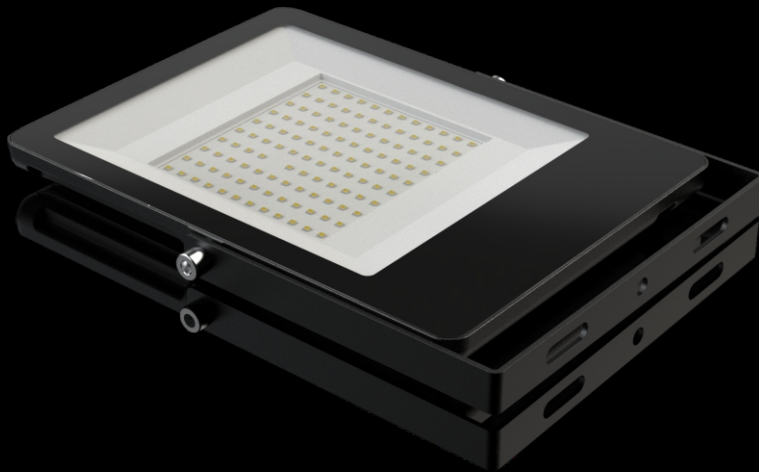
## COLOR BOX PACKING INFORMATION

Item	Inner box size	Qty/box	Qty/carton	Carton size	Product Weight	Weight (N.W)	Weight (G.W)
TSL-FL005/10	10x1.8x13cm	1pcs	80pcs	40*22*27.5cm/0.024m³	0.16kg	13.4kg	14.0kg
TSL-FL005/20	12.5x1.8x16.5cm	1pcs	60pcs	40*39.5*18cm/0.028m³	0.25kg	15.6kg	16.2kg
TSL-FL005/30	15x2x19cm	1pcs	40pcs	44*32*20.5cm/0.029m³	0.43kg	17.5kg	18.0kg
TSL-FL005/50	17.5x2.2x23cm	1pcs	24pcs	37*29.5*24.5cm/0.027m³	0.62kg	14.6kg	16.2kg
TSL-FL005/100	24x2.5x32cm	1pcs	10pcs	28*25.5*33.5cm/0.024m³	1.37kg	14.2kg	14.9kg

## BLISTER PACKING INFORMATION



Item	Qty/box	Qty/carton	Carton size	Product Weight	Weight (N.W)	Weight (G.W)
TSL-FL005/10	1pcs	50pcs	53*21.5*17.5cm/0.02 m³	0.16kg	9.5kg	9.85kg
TSL-FL005/20	1pcs	50pcs	53*36.5*15cm/0.029m³	0.25kg	13.5kg	13.9kg
TSL-FL005/30	1pcs	30pcs	42*36*17cm/0.027m³	0.43kg	13.8kg	14.2kg
TSL-FL005/50	1pcs	20pcs	49.5*27.5*19.5cm/0.02m³	0.62kg	13.2kg	13.6kg
TSL-FL005/100	1pcs	10pcs	36*35*26.5cm/0.032m³	1.37kg	14.2kg	14.8kg



## FEATURES

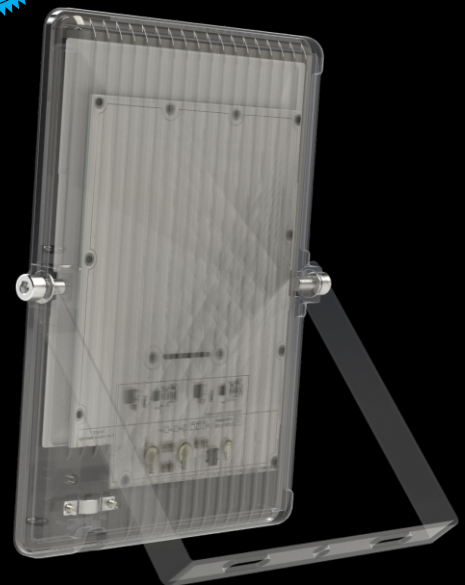
1. AC110&230V 50/60Hz.
2. Lighting efficacy up to 100lm/W.
3. Famous brand 2835SMD light source.
4. PF>0.9, THD<25%.
6. Die-casting aluminum body.
- Anti-corrosion powder painting.
7. IP65 Waterproof for outdoor use.
8. 2 years warranty.
9. Export certificates are available.

## CAUTIONS:

1. Installation must be done by professional electricians. .
2. Do NOT take apart the product. It may be dangerous.
3. Do NOT stare at the light with naked eyes. It is harmful to eyes.
4. For outdoor lighting, waterproof measurements must be done to the cable terminals.

## WARRANTY:

1. All LED Flood Lights are warranted by the manufacturer to be free of defects in material and workmanship for 2 years.
2. Warranty becomes void if the products is modified, improperly installed or used, damaged by accident or neglect, or if any parts are improperly installed or replaced by the user,
3. During the period of warranty time, if some products of us fails during normal circumstances and applications or have any defects above defined, we shall at our own choice replace or repair the defective products at no charge. And the liability claims would NOT exceed the value of the product itself.



**FOSHAN THELUX LED LIGHTING CO., LTD.**

Email: [vip@theluxlighting.com](mailto:vip@theluxlighting.com)

<http://www.theluxchina.com> [www.theluxlighting.com](http://www.theluxlighting.com)

Add: 9th floor, Donglian Building, Xingtian Town, Shunde District, Foshan City, Guangdong, P. R. China.