

# Thelux



## Features

1. AC85-277V/200-277V 50/60Hz.
2. Lighting efficacy up to 100lm/W.
3. Famous brand 2835SMD light source.
4. PF>0.9, comply with LVD/EMC.
6. Die-casting aluminum housing.
- Anti-corrosion powder painting.
7. IP65 Waterproof for outdoor.
8. 2 years warranty.

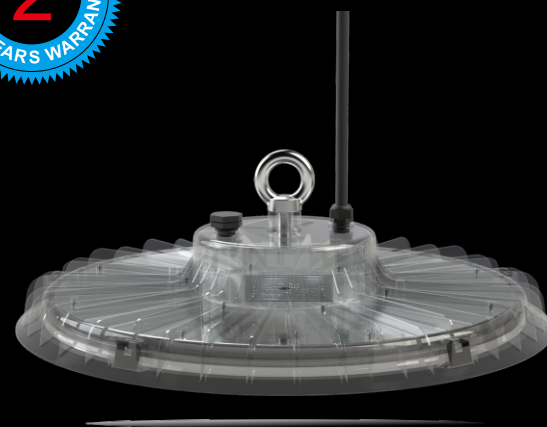


## CAUTIONS:

1. Installation must be done by professional electricians. .
2. Do NOT take apart the product. It may be dangerous.
3. Do NOT stare at the light with naked eyes. It is harmful to eyes.
4. For outdoor lighting, waterproof measurements must be done to the cable terminals.

## WARRANTY:

1. All UFO High Bay Lights are warranted by the manufacturer to be free of defects in material and workmanship for 2 years.
2. Warranty becomes void if the products is modified, improperly installed or used, damaged by accident or neglect, or if any parts are improperly installed or replaced by the user,
3. During the period of warranty time, if some products of us fails during normal circumstances and applications or have any defects above defined, we shall at our own choice replace or repair the defective products at no charge. And the liability claims would NOT exceed the value of the product itself.



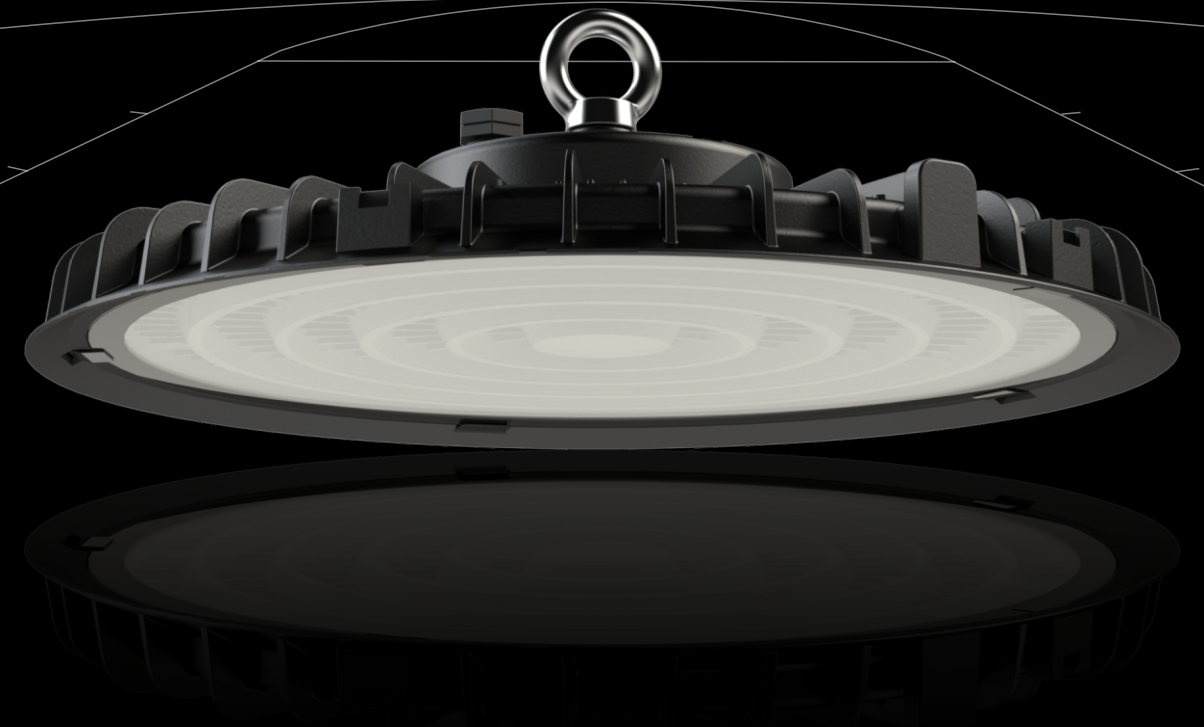
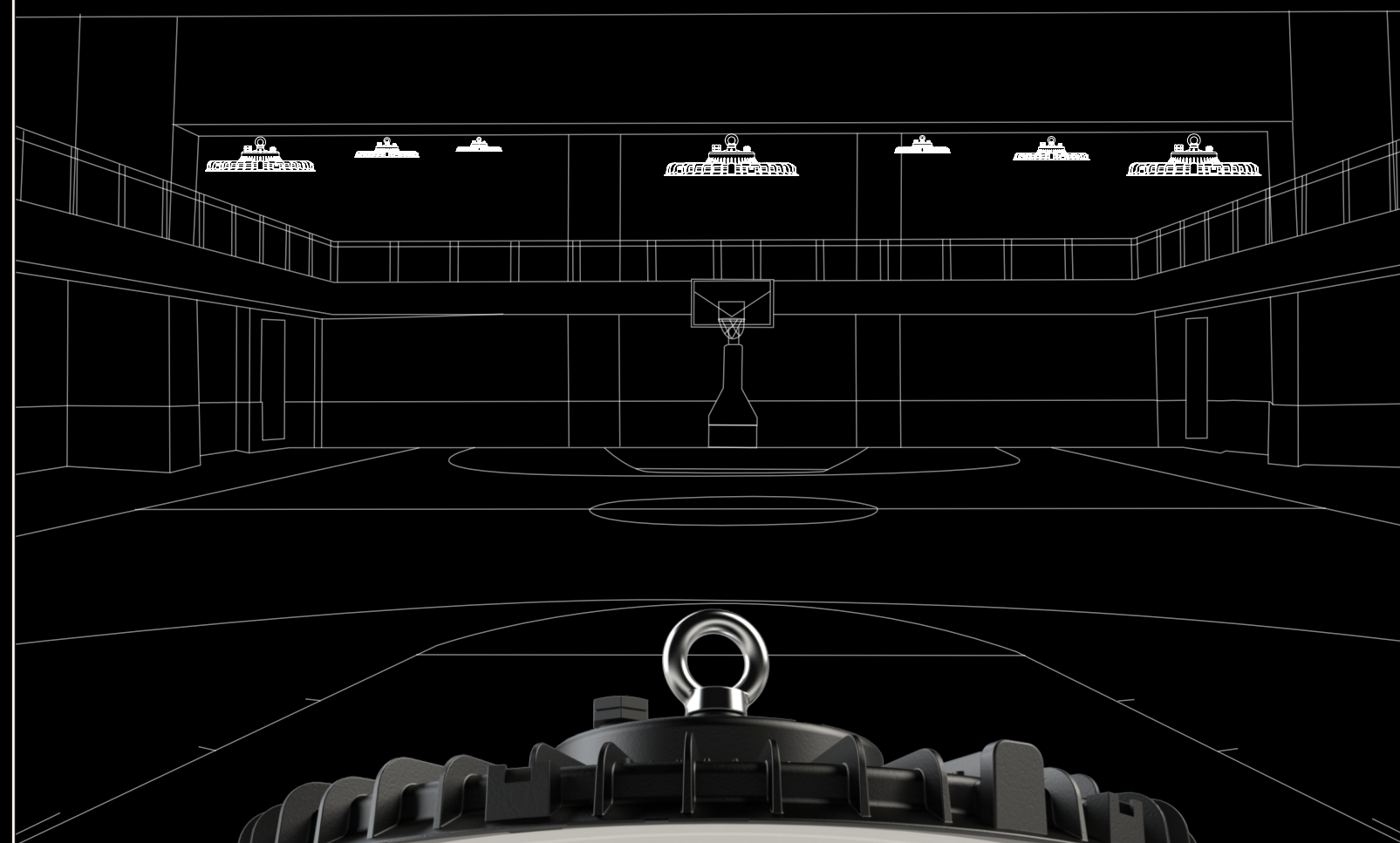
FOSHAN THELUX LED LIGHTING CO., LTD.

Email: [vip@theluxlighting.com](mailto:vip@theluxlighting.com)  
<http://www.theluxchina.com> [www.theluxlighting.com](http://www.theluxlighting.com)  
Add: 9th floor, Donglian Building, Xingtan Town, Shunde District, Foshan City, Guangdong, P. R. China.

# Thelux

## LIFO HIGH BAY LIGHT

### TSL-HL012



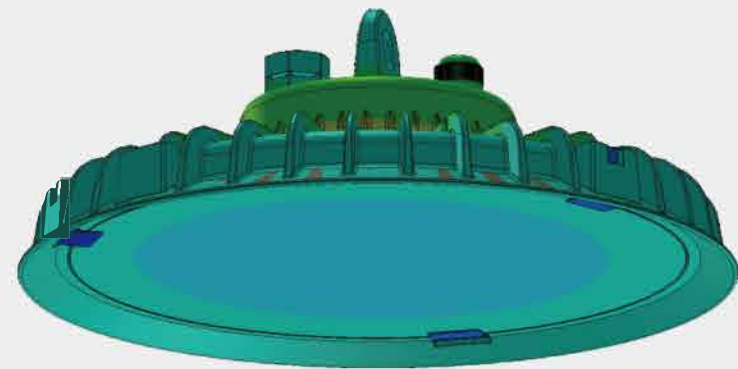
## OVERVIEW

# Thelux

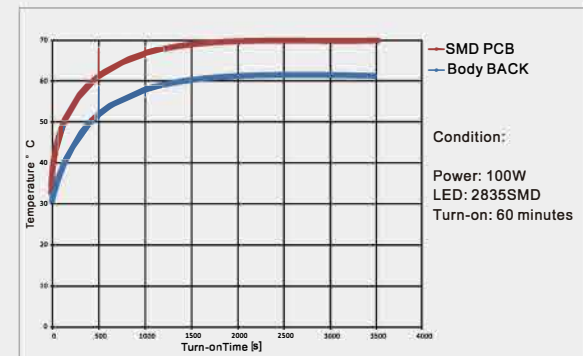


## THERMAL MANAGEMENT

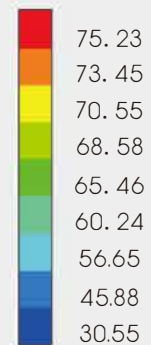
Structure is optimized by advanced FEA technology. Achieving longer lifespan at best cost-efficiency.



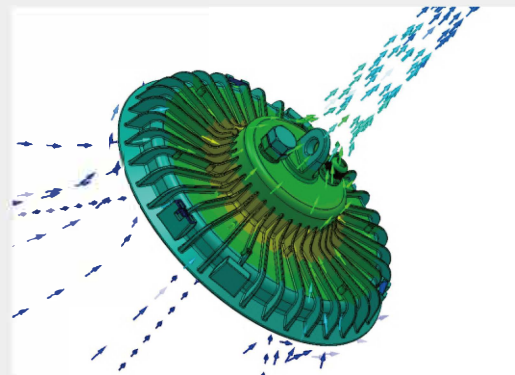
Thermal Conductivity



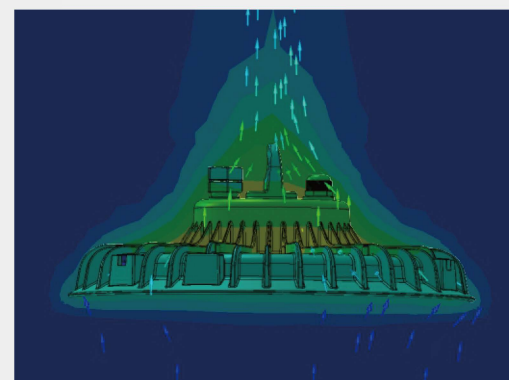
Temperature Rise Curve



Unit: °C



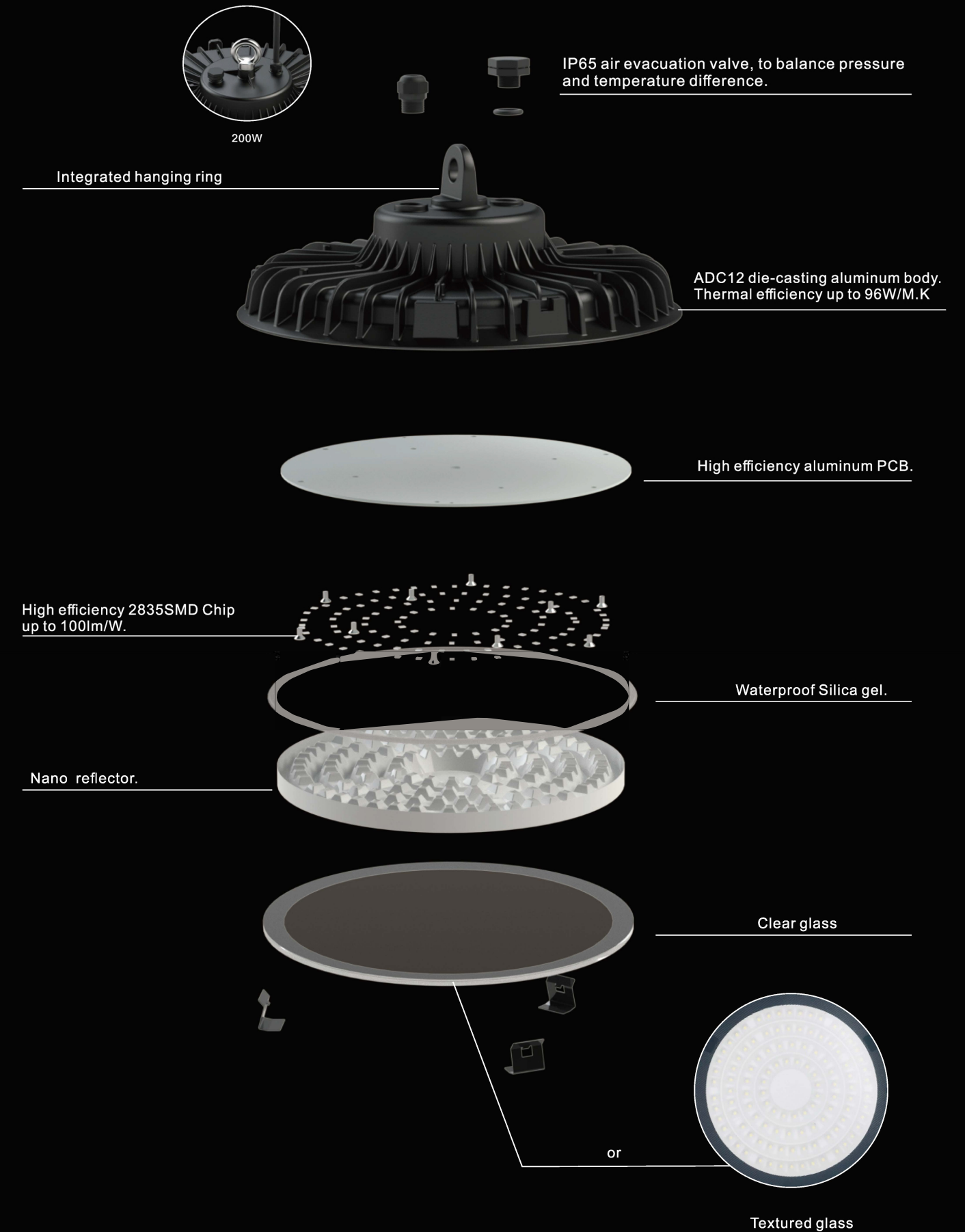
Thermal Air Convection



Thermal Air Flow(to environment)

## EXPLODED

# Thelux





APPLICATIONS

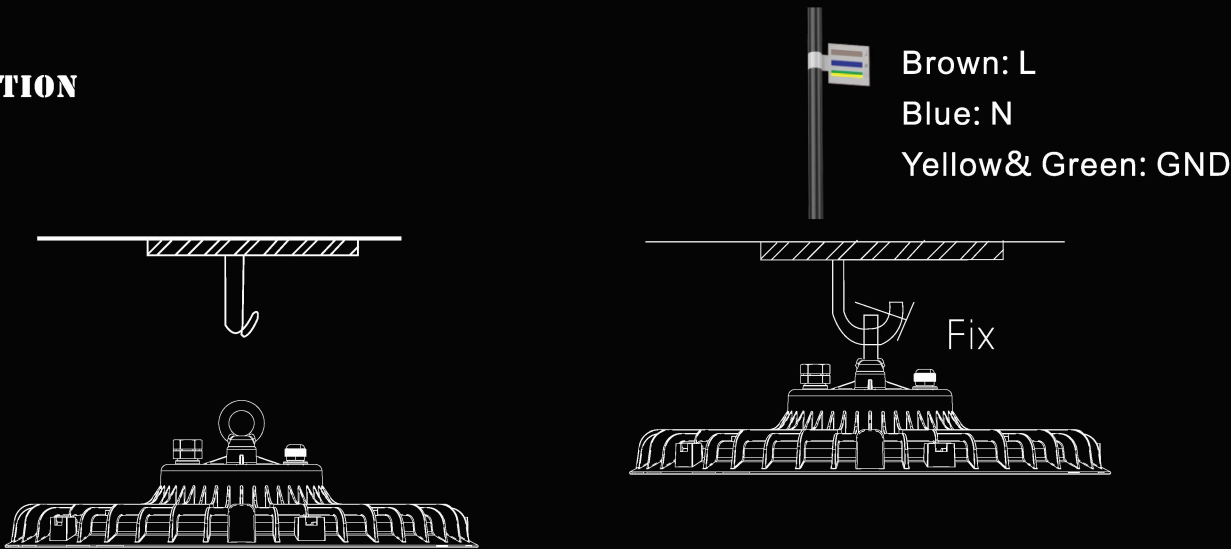
Suitable for warehouse, sports centers, logistic centers, supermarkets, train stations and other similar indoor and outdoor locations.

Thelux



warehouse

INSTALLATION



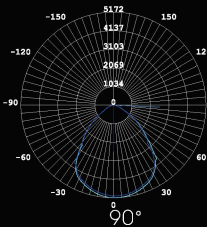
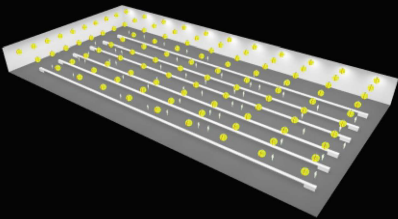
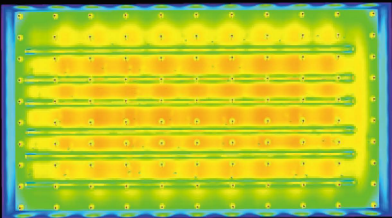
OPTICS

Thelux

Tech. Support: Tell us the room length, width, height and the usage. We have an engineer team to respond the DIALUX simulations for lights quantity calculation and effects. .ies files are available upon request.



Height	Average Lux			Central Lux	Spot Diameter
	100W	150W	200W		
1.50m	1103.841x	x1.5	x2.0	2296.781x	283.96cm
	620.911x			1291.941x	378.62cm
2.00m					
4.00m	155.231x			322.991x	757.23cm
6.00m	68.991x			143.551x	1135.85cm
8.00m	38.811x			80.751x	1514.46cm



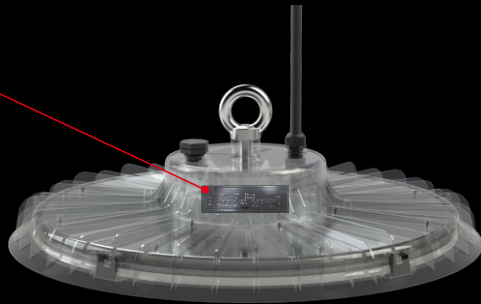
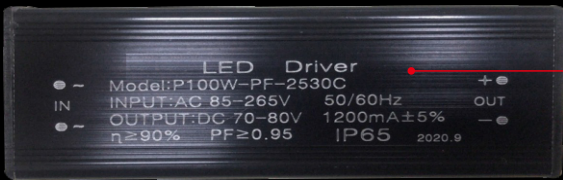
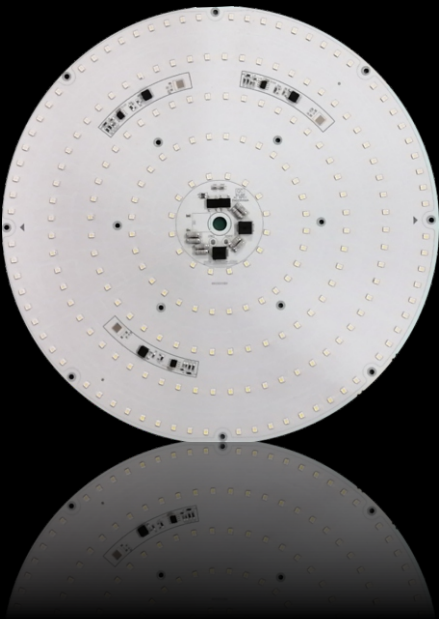


ELECTRICAL

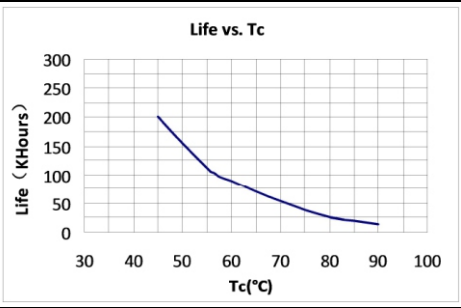
DOB or Constant current driver solution.

DOB Solutions

- 1. AC220V-277V 50/60Hz.
- 2. PF>0.9.
- 3. Comply with LVD&EMC
- 4. 4KV-10KV Surge protection .
- 5. High grade IC.
- 6. Efficiency>92%, more energy-saving.
- 7. Start time 0.75S.



4KV SURGE PROTECTION



Constant Current Solution:

- 1. AC85-277V 50/60Hz.
- 2. PF>0.95.
- 3. Comply with LVD&EMC .
- 4. 4KV-10KV Surge protection .
- 5. Efficiency>90%.
- 6. Start time 0.75S.



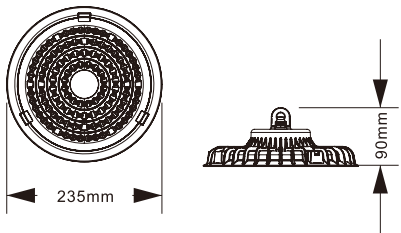
FLOOD LIGHT MODULE

TSL-HL012/100



LED Module: 112pcs/2835  
LED Power: 100W±10%  
Product Size: Φ235xH90mm  
THD≤30% Surge:4~10kV/kA  
Lux Efficiency: 100LM/W  
LED Initial Flux: 10000-11000LM  
Power Factor: >0.9  
Voltage: AC200-277V / AC85-277V

Beam Angle: 90°  
Color Temp.: 3000K/4000K/6000K  
Color Rendering Index: Ra>75-85  
IP Grade:IP65 IK Grade:IK07  
Working Temp.: -40°C ~ +55°C  
Working Life-Span: 25000H  
Connect Wire: Brown/Blue/Yellow  
LED Driver: Constant Current Solution & DOB Solution

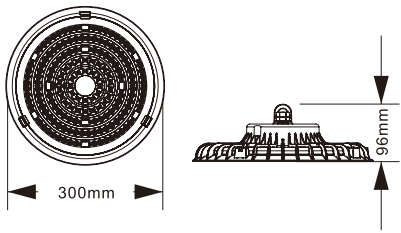


TSL-HL012/150



LED Module: 168pcs/2835  
LED Power: 150W±10%  
Product Size: Φ300xH96mm  
THD≤30% Surge:4~10kV/kA  
Lux Efficiency: 100LM/W  
LED Initial Flux: 14000-15000LM  
Power Factor: >0.9  
Voltage: AC200-277V / AC85-277V

Beam Angle: 90°  
Color Temp.: 3000K/4000K/6000K  
Color Rendering Index: Ra>75-85  
IP Grade:IP65 IK Grade:IK07  
Working Temp.: -40°C ~ +55°C  
Working Life-Span: 25000H  
Connect Wire: Brown/Blue/Yellow  
LED Driver: Constant Current Solution & DOB Solution

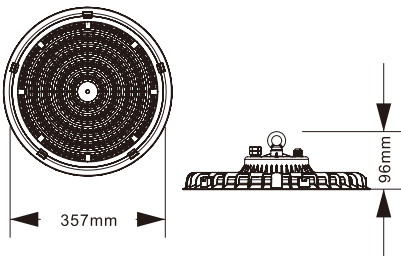


TSL-HL012/200



LED Module: 224pcs/2835  
LED Power: 200W±10%  
Product Size: Φ357xH96mm  
THD≤30% Surge:4~10kV/kA  
Lux Efficiency: 100LM/W  
LED Initial Flux: 18000-20000LM  
Power Factor: >0.9  
Voltage: AC200-277V / AC85-277V

Beam Angle: 90°  
Color Temp.: 3000K/4000K/6000K  
Color Rendering Index: Ra>75-85  
IP Grade:IP65 IK Grade:IK07  
Working Temp.: -40°C ~ +55°C  
Working Life-Span: 25000H  
Connect Wire: Brown/Blue/Yellow  
LED Driver: Constant Current Solution & DOB Solution



PACKING

	TSL-HL012/100	TSL-HL012/150	TSL-HL012/200
Inner box size	25*9.5*25cm	31.5*10.5*31.5cm	37*10*37cm
Qty/box	1pcs	1pcs	1pcs
Qty/carton	10pcs	5pcs	5 pcs
Carton size	52*50.5*27cm/0.071m³	55.5*33.5*33.5cm/0.062m³	53*38.5*38.5cm/0.064m³
Product Weight	1.2kg	1.8kg	12kg
Weight (N.W)	12.0kg	9.0kg	13kg
Weight (G.W)	12.8kg	10.5kg	9.0kg